

Provincial Museums and Heritage Sites on PEI

“The Prince Edward Island Museum & Heritage Foundation,
the Provincial Museum system, opens doors to our past.”



MUSEUM & HERITAGE
PRINCE EDWARD ISLAND

Provincial Museums and Heritage Sites on PEI

Elmira Railway Museum

Elmira, PEI

Open for the season June 6th, 2011

Admission: **Miniature Train Ride:**

Adult: \$4.00

Adult: \$5.00

Student: \$3.00

Student: \$3.50

Family: \$ 11.00

Preschool: Free

Family: \$13.50



A Journey into the Past

Known as the end of the line for those traveling east on Prince Edward Island, Elmira Station became an important part of railroading on the Island in the early 1900's.

Opening in 1912, during the last major extension on the rail line, the station became a beehive of activity.

The yard featured five rail spurs, an engine house, a 200-foot coal shed, a barn, bunkhouse and shacks for the conductors and engineers. Only the wooden station house, the platform, freight shed and three master's office have been re-created with maps and artifacts, such as the telegraph, which was often used at Elmira as passenger came and went.

More than a Historical Experience

Since Elmira Station re-opened in 1975, the museum has expanded and undergone extensive renovations to offer its visitors more than just a historical experience. Those who visit the station, not only leave with a sense of how railroading helped shape the heritage of the little colony, but also experience the beauty of Prince Edward Island.

A True Treasure

In the last few years, there have been many additions to the Elmira Railway Museum. A new building was constructed to enhance the museum's display space.

Visitors can catch a glimpse of what the old railway system was like over a century ago, through the model train that was fashioned after it.

A miniature train system is available, which will take visitors around the local area. An outdoor stage was created out of the base of an old flatcar, and every summer the museum hosts a variety of special events, such as festivals, live music and dancing.

The Beauty of Prince Edward Island

Just minutes away from the sandy white beaches of the Gulf of St. Lawrence, visitors can enjoy deep sea fishing, clam digging or a stroll along the beach at North Lake Harbor. North Lake is considered the Tuna Capital of the world.

Only minutes away you can experience the East Point Lighthouse where you can climb to the top and view the magnificent vista. The tides of the Northumberland Strait and Gulf of St. Lawrence meet here and show a force of nature.

For those seeking to take in the beauty of the landscape and a little more adventure. Elmira Station is the gateway to the "Rails to Trails" system. A coalition of groups in the area have converted the abandoned rail lines into 23 km of breathtaking hiking and biking trails.

The restaurant is located next to the main station, and has a lovely picnic area and boardwalk close by. Elmira Station is fully equipped with bathroom facilities changing rooms and showers. The museum also has its own gift shop, so that visitors can take home their own piece of railway history and of the Island.

Orwell Corner

Orwell, PEI

Hours of Operation 2011

~Tuesday May 24 -Thursday June 30 Monday - Friday 9:00am - 4:30pm

~Friday July 1 to Sunday September 4 Daily 9:30am – 5:30 pm

Closed Labor Day September 5

~ Tuesday September 6 to Friday October 7 Monday- Friday 9:00am-4:30 pm

Closed for the season after October 7

Admission:

Adult: \$7.50
 Student (age 6-18) \$4.50
 Preschool Free
 Family (2 adults 2 kids) \$20.00

Group Rates (min 12)

Commercial Tour \$5.58
 Not-For-Profit \$4.65
 School Tours \$3.72

A special picnic lunch is also available for groups providing advance notice. Lunch is packed in a traditional picnic basket and includes sandwich, scone, butter & jam, lemonade, tea/coffee. Picnic lunch is subjected to a refundable deposit on the basket and to be enjoyed on the new scenic look off, while enjoying the view into Orwell Bay.

History

Orwell Corner Historic Village opened in July of 1973. Orwell was named in 1769 by Surveyor General Captain Samuel Holland in honor of Lord Francis Orwell, British Minister of Plantations. Much of the early settlement took place at Orwell Cove and as fields were cleared and roads improved settlement moved inland. The small crossroads community was founded in the early nineteenth century by Scots that arrived on the Island with the Glenaladale Settlers brought out by Captain John MacDonald, as well as families that came from Isle of Skye, County Monaghan in Ireland and United Empire Loyalists. Many of the current residents in the Orwell community are descendants of these early pioneers. In 1970 the Provincial Centennial Commission, various departments of the Provincial and Federal governments and dedicated volunteers in the community set plans into action and the site was restored to the late nineteenth century. The buildings were



furnished with artifacts from the Provincial Collection and it opened to the public in July of 1973.

A Walk into the Past

Your first stop will be the *PEI Agricultural Heritage Museum*. Here you will enjoy an exhibit on the history of European agriculture in PEI. Explore the many artifacts from the Provincial Collection, hear the voices and experiences of real Islanders and we're sure you'll leave with a better understanding of the struggles our forefathers faced to do something we all take so much for granted ~ eat.

Following along the old roadway up the hill you will arrive at *The Orwell School* that first opened its doors in 1895 and was used by the community until the rural schools in the area were consolidated in 1969. On average around 20 pupils attended this school and Mr. J.S. O'Neil was the first instructor.

The Orwell Church was built in 1861 by the Scottish Presbyterians of the community. Until its construction, people in the district attended St. John's Presbyterian Church in nearby Belfast. Services as late as 1900 were conducted in English and in the Gaelic language. In the 1920's the church became part of the United Church of Canada and was used until 1970 when churches in the area were consolidated and a new building erected at Vernon Bridge. The adjacent cemetery dates back to 1884 and is still used by members of the Orwell congregation.

The intersection at Orwell Church is an actual intersection of two original Island roadways that were used until replaced by the more modern roadways we are familiar with today. The signpost indicates the direction of travel to nearby communities. This intersection is the reason for the name Orwell "Corner".

Across the intersection is *D.E. Clarke's General Store*. The Clarke family came to PEI from Galway Ireland in 1856 and brothers Richard and Denis opened this general store in 1864. As the community merchant, Mr. Clarke also served as a local dealer in farm produce at a time when bartered accounts outnumbered cash settlements. The store operated until 1906. The store has many antiques items that would have been available in the 1890's.

Denis Clarke also had the contract for the *Postal Service* for the community and along with bringing in a modest commission, it brought customers to his store on a regular basis.

The Blacksmith Shop, the center of many activities at the turn of the century including shoeing horses and oxen, making small tools and implements, and repairing wagons and farm machinery. Older residents also tell of a time when the blacksmith served as the local dentist, animal trader, as well as building box sleighs in the winter time. The forge is still used on an occasional basis and items for sale in the gift shop are manufactured there. Many of the artifacts have been generously donated by Harold Jay, who also made replica hardware and weathervanes for some of the buildings on site.

E.D. Taylor's Shingle Mill is located 50 meters past the Blacksmith shop along the same

roadway. This houses a 1915 Bruce Stewart milling machine with attached edger, used to make many of the shingles used in the initial restoration of the site. Some of the buildings still have their original hand made shingles, made using a froe and mall. The mill is still operated on special events days. The mill also houses a number of other woodworking artifacts including saws, lathes, and shingle packers.

The Farm Yard is always a popular area for visitors, especially children. In the barns and surrounding pasture land you will find chickens, sheep, pigs, goats, and draft horses. Also the carriage shed and machine shed hold a great collection of early farm machinery, wagons, carts, tools and implements. The 1890's farm was largely a mixed operation with potatoes and grain products as the main source of farm income. Dairy farming underwent a major boost in the later part of the century with the introduction of improved herds and the construction of butter and cheese factories across the Island. The one at Orwell Cove was one of the first to open its door

Eptek Art and Culture Center

Summerside, PEI

Hours of Operation:

September

Monday - Friday 9:00am - 4:00 pm

Sunday 12:00pm - 4:00 pm

October - May

Tuesday- Friday 10:00am - 4:00pm

Sunday 12:00pm - 4:00pm

June, July & August

Monday - Saturday 9:00am - 5:00pm (call in early June to confirm Mondays)

Sunday 12:00pm - 5:00pm



Admission by donation

Eptek Art and Culture Centre offers regional and Island exhibits year round showcasing themes ranging from history to art, including periodic displays of the permanent collection of paintings by the late Island artist, Dr. George Read Barton. Sample the rich culture that Islanders and visitors alike are sure to find intriguing.

Acadian Museum

Miscouche, PEI

Hours of Operation:

Winter Hours (September 1 - June 30)

Monday - Friday 9:30am - 5:00pm

Sunday 1:00pm - 4:00pm

Summer Hours (July 1 - August 31)

Daily 9:30am - 5:00 pm



Admission:

Adult: \$4.50
 Student: \$3.50
 Family: \$12.50

Follow the fascinating odyssey of Island Acadians from 1720 to the present; discover treasures related to the Acadians' three hundred year presence on Prince Edward Island. View a highly rated interpretive video and visit exhibits which showcase the multifaceted aspects of Acadian history and culture. Investigate your Acadian family roots through the onsite genealogy resources. Learn in the outdoors with a stroll out on heritage trail where interpretive panels depict the Acadian story. Gift shop on site.

Beaconsfield Historic House:

Charlottetown, PEI

Hours of Operation:**Spring Hours**

Monday, Tuesday, Thursday, Friday 12:00pm - 4:00pm
 (Other times by appointment)

July - August

Daily 10:00am - 5:00pm

September to June hours vary, please call to confirm tour times,
 (902)-368-6603

**Admission:**(GST included)

Adults: \$4.50
 Students: \$3.40
 Family \$12.35

Built in 1877 for a wealthy shipbuilder and merchant, Beaconsfield stands as an enduring symbol of Victorian elegance. With twenty-five rooms, eight fireplaces and imported chandeliers. Beaconsfield was one of Charlottetown's finest homes. Today, the house is open to the public for tours and host a variety of special events in its Carriage House. A bookstore with a variety of Island publications is on site.

Basin Head Fisheries Museum

Basin Head, PEI

Hours of Operation:

Opening June 1st
 Daily 9:00am - 5:00pm

Admission:

Adults: \$4.00
 Student: \$3.50
 Family: \$11.50



Situated on the bluff overlooking the Northumberland Strait, Basin Head Fisheries Museum tells the story of PEI's historic inshore fishery through all new displays and exhibits that will help you travel back in time. Wander the boardwalk or stroll along the magnificent white "singing" sands. Discover the wonderful gift shop located inside the museum, food and beach services and the children's play village.

Green Park Shipbuilding Museum and Yeo House:

Tyne Valley, PEI

Hours of Operation:

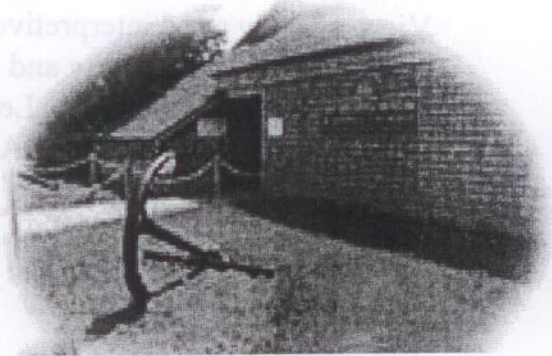
Open Daily 9:30am - 5:30pm

Admission:

Adult: \$5.00

Student: \$3.50

Family: \$13.50



Step back in time and re-live the story of the Prince Edward Island shipbuilding industry in its glory days. Explore the restored Victorian rooms of historic Yeo House, home of successful shipbuilder, James Yeo, Jr., considered to be the richest and most influential man in the colony.

Prince Edward Island Potato Museum:

O'Leary, PEI

Hours of Operation:

Monday thru Saturday 9am - 5pm

Sundays 1pm - 5pm

Open May 15th to October 14th inclusive and on holidays during that period.

Admission:

Per person* \$ 6.00 + 7% GST

Per Family \$14.00 + 7% GST

Group/Bus \$ 4.00 + 7% GST

School Groups Free



The Prince Edward Island Potato Museum is located in the community of O'Leary. It is surrounded by fertile potato growing fields where the humble potato has played an important role in the economy for many years. The museum depicts an interesting display of the potato industry, and house a large collection of farm implements and machinery related to the growing and harvesting of potatoes. In fact, this museum contains the largest exhibit of potato artifacts in the world!

Your visit to this unique museum will definitely be an enjoyable and worthwhile learning experience!

Some Exhibits And Sites You Can Tour

First you can experience the *Potato Interpretive Centre*, here you will take a journey through time, learning about the potato from its beginning as a wild food source in South America, to the fourth largest commercial crop in the world. A storyline in English and French interprets the 13 stations (i.e. origins of the potato, nutritional value of the potato, growth of the PEI industry ect) consisting of photographs, captions, sketches, graphs and model displays.

The *Machinery Gallery* contains a collection of farm machinery once used to plant, cultivate, and harvest potatoes, and originally drawn by horses. A storyline in English and French with photographs enable the visitor to discover how this machinery was used in the past.

The *Amazing Potato Exhibit* is a national exhibit that was previously displayed at the National Museum of Science and Technology and at the Canadian Agriculture Museum in Ottawa. It is a large professional display depicting the history and culture of the potato. There are numerous extraordinary displays as well as interactive terminals for education and entertainment.

Before entering the Exhibit, you will find the *Potato Hall of Fame*, recognizing those who have contributed a great deal to the growth and development of the potato industry.

Heritage Lane consists of the *Heritage Chapel* which was constructed during 1879/1880 and served three faiths, Bible Christian, Methodists and Roman Catholic. The *Log Barn* which was constructed in 1972 to display agriculture machinery and farm implements from the past. The *Little Red Schoolhouse*, this little one-room schoolhouse was built in 1900 in the district of Alaska, not far from O'Leary and continued till 1972. The *Telephone Office* in O'Leary was at a toll station in the home of Alfred Adams and the first telephone office was operated by Mrs. Thomas Tuner from her home on Main Street.

Prince Edward Island Shellfish Museum

Bideford - Ellerslie

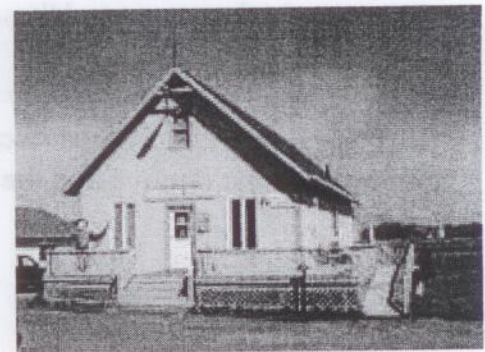
Hours of Operation:

Monday thru Saturday 9am - 5 pm

Sunday 1pm - 5pm

Open for seasonal months

This small museum focuses on the Island's oyster industry. The museum's purpose is to preserve the history and heighten the awareness of the public regarding the value of the shellfish industry in the local area. There are informative displays and aquariums with many varieties of shellfish, including lobster. There are artifacts relating to species identification, the history of oyster cultivation, and the growth and culture of shellfish. Oysters and mussels are available for sale in small quantities



Alberton Museum:

Alberton, PEI

Hours of Operation:

Monday thru Saturday 10am - 5:30pm

Sunday 1pm - 5pm

Admission:

Adults: \$3.00

Seniors: \$2.00

Family: \$7.00

Discounts for groups, seniors and students

Open from June to September

Alberton Museum is housed in the former town courthouse and jail erected in 1878, the only National Historic Site and Provincially Designated Historic Site west of Summerside. The museum's artifact collection depicts the range of activities carried out by PEI's early settlers.

The exhibit consists of five parts:

Part one is an introduction to the geographical location of the town, its historical development and some of the local architecture, past and present..

Part two is a synopsis of the local industries and services which were instrumental in the growth of the town. It attempts to show the diversity of the town and the immediate area.

Part three gives images and brief biographies of 27 local persons who achieved "fame" or prominence far beyond the borders of their town, country or province.

Part four looks at the abundance of religion denominations represented in the town. Many of the churches which represented these faiths changed from one denomination to another and moved their physical location.

Part five is a "mini" art gallery of the drawings and painting of Alberton's famous artist, Hubert Rogers. His paintings of local scenes capture the beauty of the region, and his portraits and sketches honour both the famous and the ordinary.



New information taken from <http://www.peipotatomuseum.com/site/index.htm>,

<http://www.museumspei.ca/prince.html>,

http://www.virtualmuseum.ca/pm_v2.php?id=exhibit_home&fl=0&lg=English&ex=00000551,

http://search.tourismpei.com/search/OperatorDetails/op_id/4942/

Provincial Museums and Heritage Sites on PEI Quiz:

1. Elmira Railway station opened when?

- a, 1956
- b, 1912
- c, 1812
- d, 1856

2. Where is considered the tuna capital of the world?

- a, North Lake
- b, South Lake
- c, Lake Ontario
- d, PEI

3. Surveyor General Captain Samuel Holland named Orwell Corner after....

- a, Lord Albert Orwell Jr, British Minister of Plantations
- b, Sir Gormley Alfred
- c, The Honourable Albert Francis, British Minister of Plantations
- d, Lord Francis Orwell, British Minister of Plantations

4. What is special about the intersection of Orwell Corner Church

- a, It was the first intersection on PEI
- b, It was an intersection of two original Island roadways
- c, It was the spot of the first church, which burnt down

5. Orwell Church was built by a...

- a, Scottish Presbyterian
- b, Scottish Catholic
- c, Irish Protestant
- d, Presbyterian Priest

6. The Clarkes family, who own D. E Clarkes General Store, came from where?

- a, Oxford, England
- b, Stratford, England
- c, Beveau, France
- d, Galway, Ireland

7. The Blacksmith shop once served as
- a, Vet and shoe repair
 - b, Local dentist and animal trader
 - c, Local doctor and animal trader
 - d, Material shop and fast food restaurant

8. Beaconsfield was built when?

- a, 1977
- b, 1867
- c, 2003
- d, 1877

9. The profession of the owner of Beaconsfield was what?

- a, Blacksmith
- b, Vet
- c, Shipbuilder
- d, Farmer

10. The 'mini' art gallery at Alberton Museum showcases the paintings of which famous Alberton artist?

- a, Alfred Adams
- b, Hubert Rogers
- c, Mrs. Thomas Tuner
- d, James Yeo Jr.

11. PEI Shellfish Museum focuses on the Island's _____ industry?

- a, Mussel
- b, Lobster
- c, Scallops
- d, Oysters

12. The Amazing Potato Exhibit was displayed at....

- a, National Museum of Science and Technology
- b, Canadian Agriculture Museum
- c, National Historic Site
- d, A and B
- e, B and C

Provincial Museums and Heritage Sites on PEI Quiz Answer Sheet:

1. B

2. A

3. D

4. B

5. A

6. D

7. B

8. D

9. C

10. B

11. D

12. D