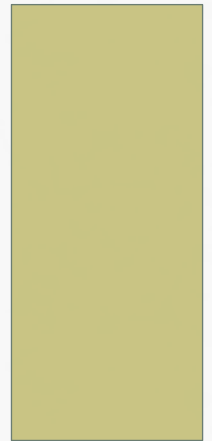




PRINCE
EDWARD
ISLAND
GRAIN
ELEVATORS
CORPORATION

CEREAL & OILSEED 2015

PEI GRAIN ELEVATOR CORP UPDATE & LOCAL
MARKETS



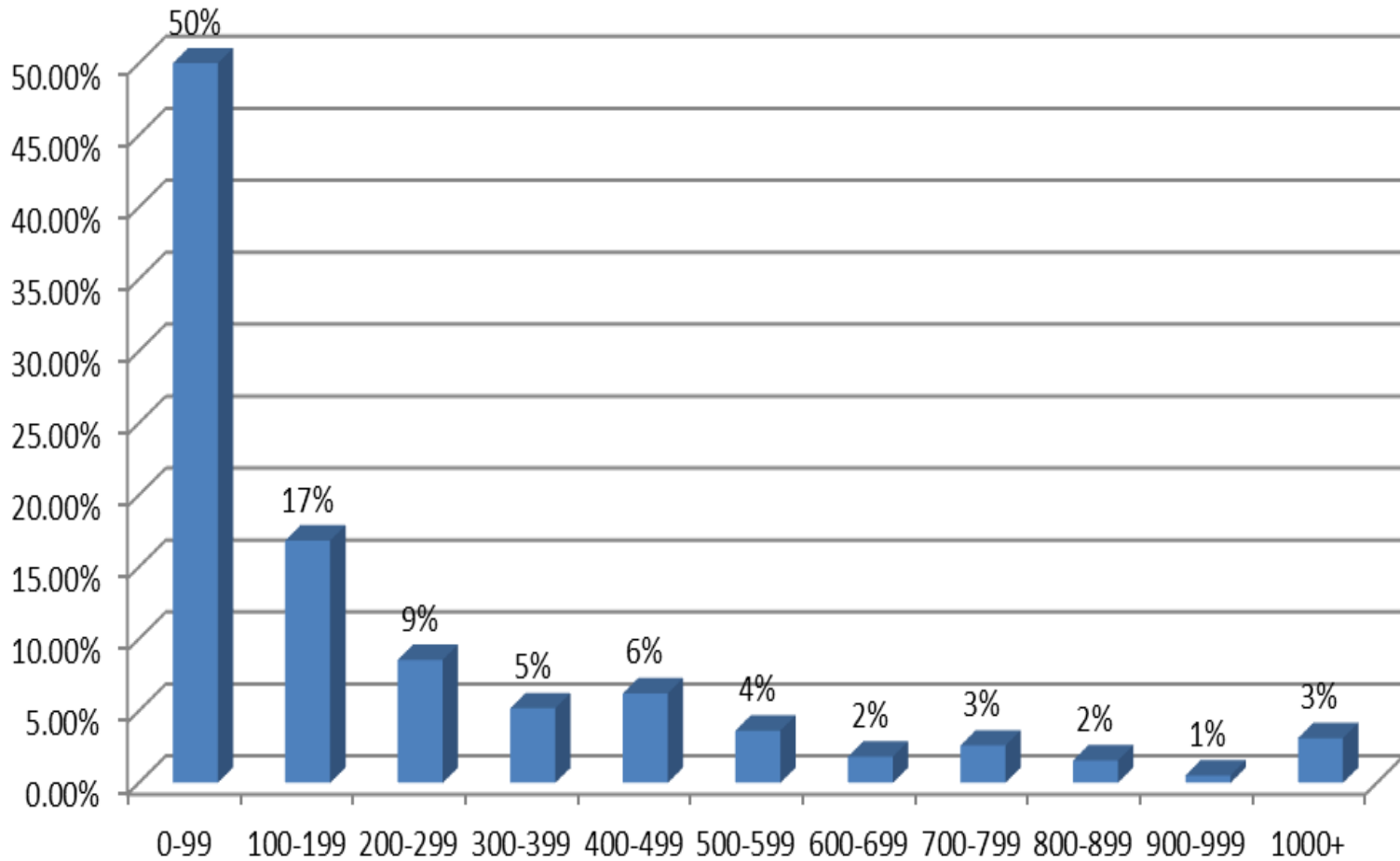
WHAT IS THE PEIGEC

- Agent of the Crown , Gov't owns the assets
- Dept of Agriculture - Minister of Agriculture
- Operated by a Board ... 6 plus a Chairperson
- 3 Locations – Elmsdale , Kensington , Roseneath
- Operate pools : Revenue – Expenses – SOC = payout and flat pricing option . Not for Profit ...Maintain the assets
- Provide service to producers for their rotational & cash crops, Stabilize prices by reducing volume at harvest .
- Commercial Infrastructure in place ! With Certified Grain Graders.



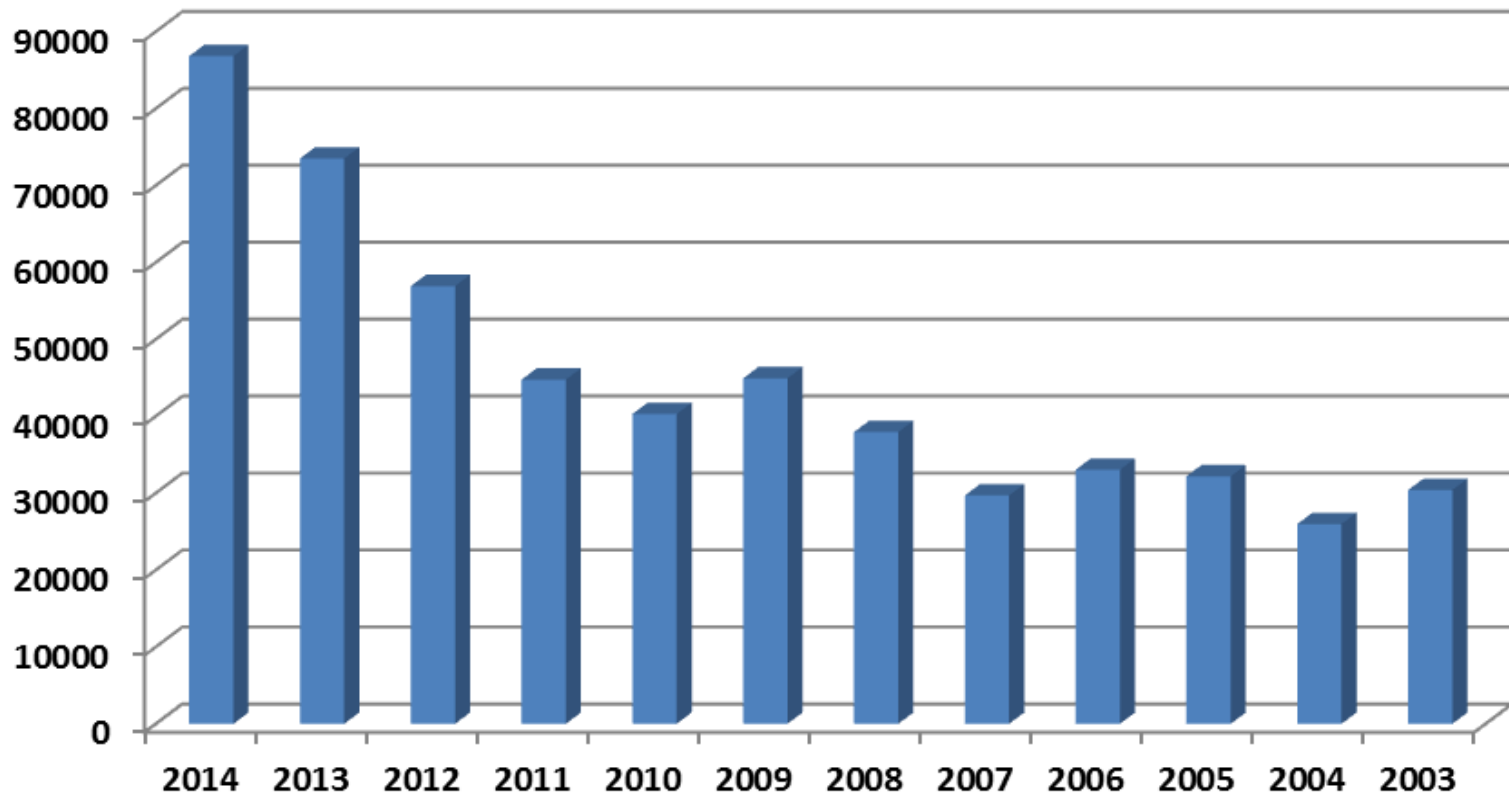
PRINCE
EDWARD
ISLAND
GRAIN
ELEVATORS
CORPORATION

2013/14 Producer Deliveries by Weight Class



2003 - 2014

PEI Grain Elevator Purchase Volume

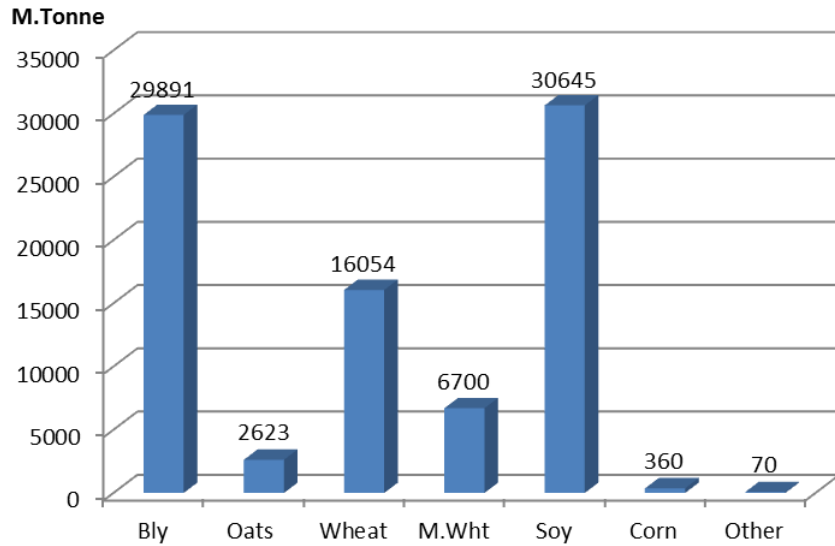




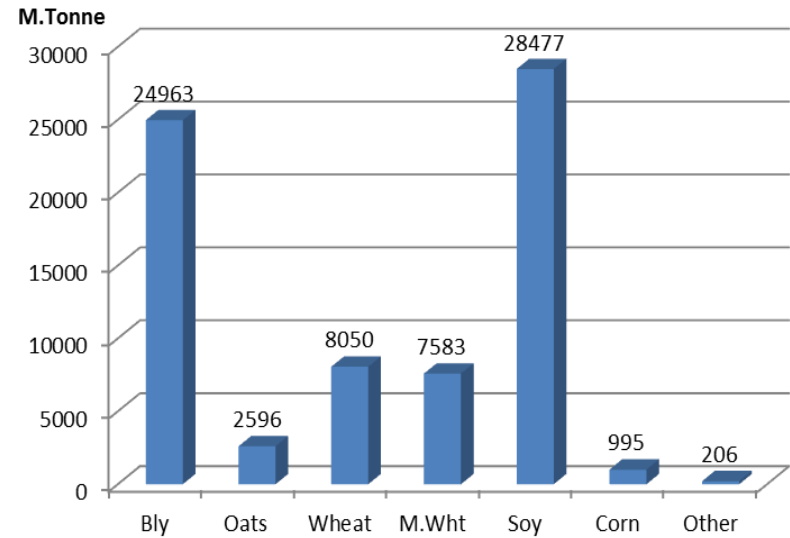
PRINCE
EDWARD
ISLAND
GRAIN
ELEVATORS
CORPORATION

COMPARISON

2014 Volume by Crop



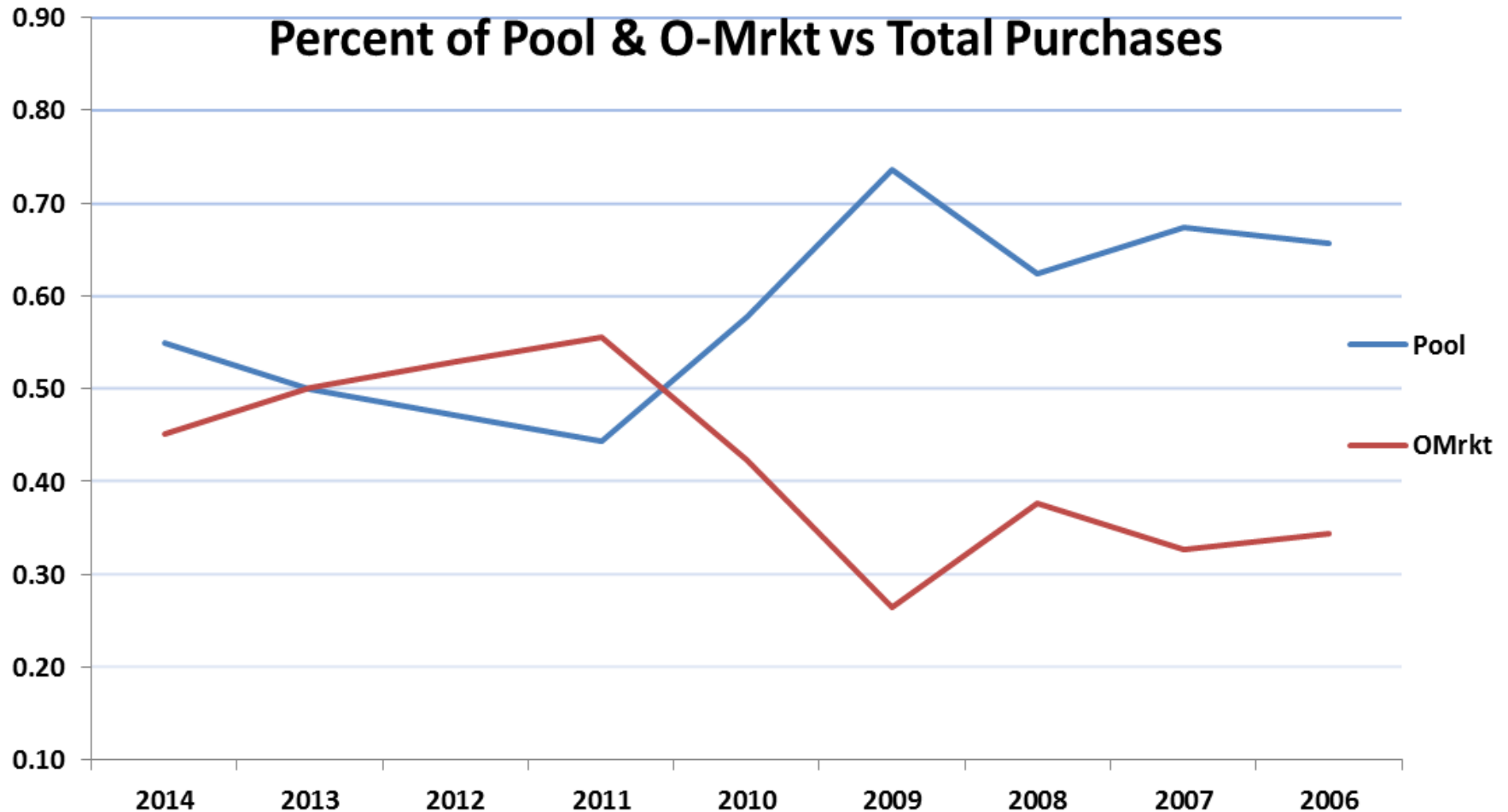
2013 Volume by Crop





PRINCE
EDWARD
ISLAND
GRAIN
ELEVATORS
CORPORATION

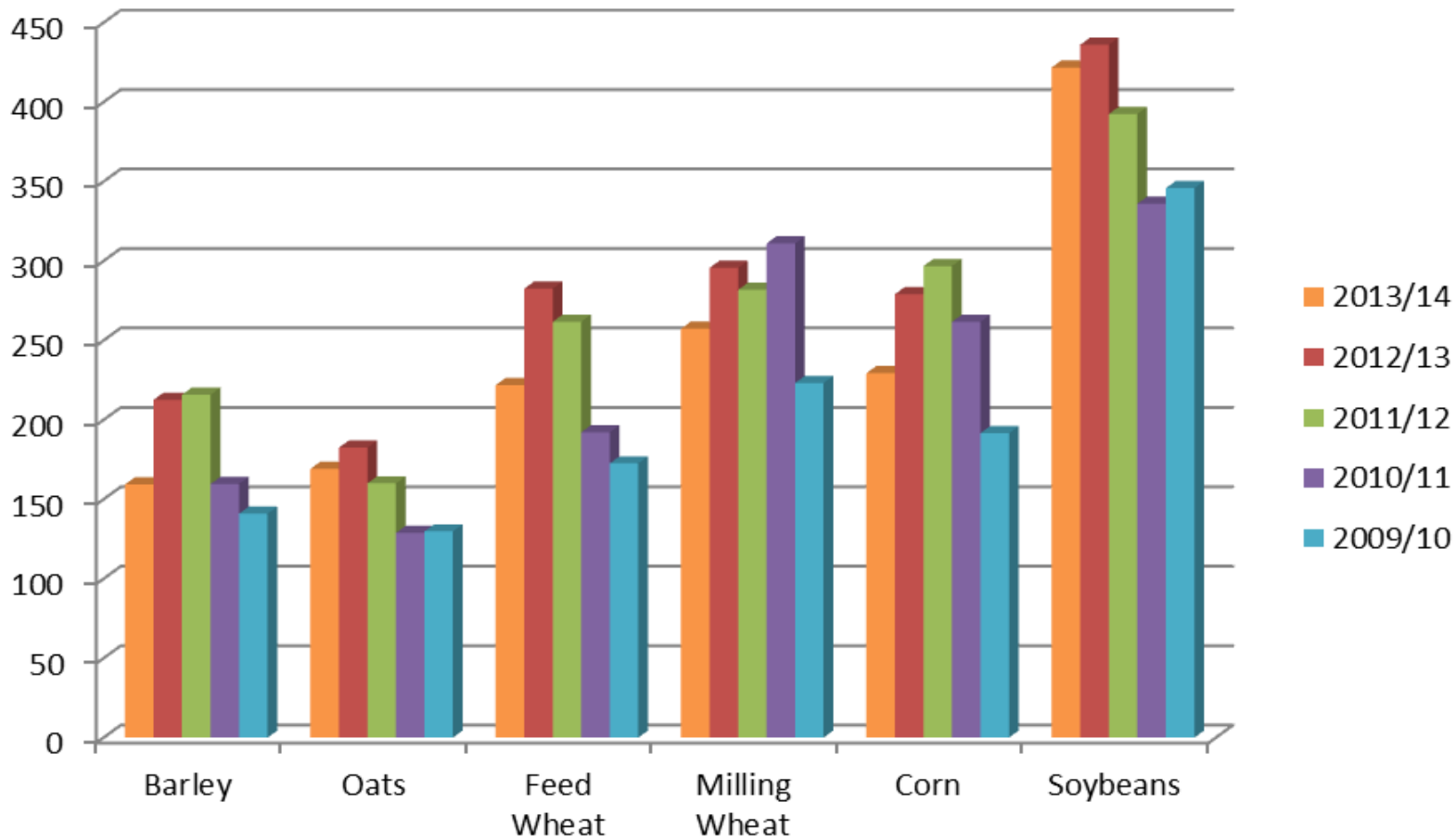
Percent of Pool & O-Mrkt vs Total Purchases





PRINCE
EDWARD
ISLAND
GRAIN
ELEVATORS
CORPORATION

PEI Grain Elevator Prices





PRINCE
EDWARD
ISLAND
GRAIN
ELEVATORS
CORPORATION

LOCAL FACTORS

- Local Demand is strong , barley , wheat
- Corn program this year ??
- Milling wheat steady , looking for new markets
- Oats steady , mostly exporting out of Atlantic
- Rye for distillers is strong
- Soybeans GMO – good local , strong for export – Hfx vessel program is working – volume is key
- Soybeans Non-GMO growing ? Premium is key
- Quality sells everywhere , making the grade
- Research on Varieties & Agronomy = Profitability