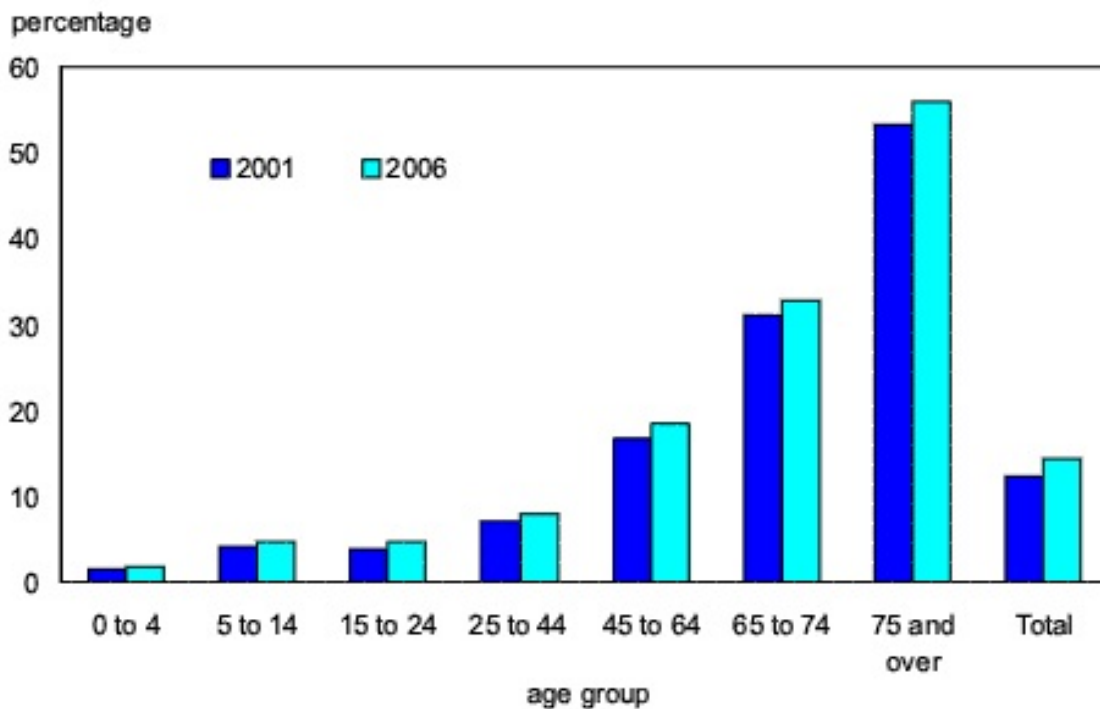


Percentage of population reporting a disability in Canada by province (PALS 2006)	
Nova Scotia	20
New Brunswick	17.2
Saskatchewan	16
Prince Edward Island*	16.3 (21,750)
Newfoundland	14.9
Quebec	10.4
National	14.3

* One in seven Islanders report having a disability; the national ratio is also one in seven. (PALS 2001 and 2006)

Disability Rate by Age, Canada, 2001 & 2006 (PALS)



- ▶ The population of Prince Edward Island is 138,519. Of that, 14.4 per cent of the population is made up of seniors, aged 65 plus. By 2030, it is expected that seniors will make up 28 per cent of Prince Edward Island's population. (Census 2006)

Percentage of population (by age group) reporting a disability (PALS 2006)		
	Canada	PEI
ages 0 to 14	3.3	4.1
ages 15 to 24	3.9	4.1
Ages 25 to 44	7.1	8.7
aged 45 to 64	16.7	21.1
ages 65 to 74	31.2	35.6
Ages 75 and over	53.3	63.2

Common Types of Disability by Age Group, Canada

- In children, aged five to 14 years-old, the most common disability types are learning disabilities (69.3 per cent) and chronic conditions including asthma, severe allergies, ADHD and Autism (66.6 per cent).
- In the adult, working age population, the most common disability cited is pain (74.4 per cent).
- In seniors, aged 65 years plus, the most common disability is mobility (76.4 per cent).

Current Provincial Government Investments for Persons with Disabilities (2007/08)

- \$ 5.47 million in annual grants to 17 community-based organizations who serve Islanders with physical, intellectual and developmental disabilities.
- \$ 9.72 million in budget costs for the Disability Support Program.
- \$ 1.2 million invested for the creation of affordable housing units for persons with disabilities (in partnership with Canada Mortgage and Housing Corporation, Government of Canada, community organizations and private sector since 2003).

Prince Edward Island Disability Support Program Caseload

Fiscal Year	2001-02	2002-03	2003-04	2004-05	2005-06	2006-07
No of clients	691	991	1,047	1,117	1,176	1,106

Prince Edward Island Disability Support Program Client Profile

Type of disability (2006/07)	Number of clients
Physical	296
Intellectual	324
Mental Illness	2
Both intellectual disability and mental illness	17
Both physical and intellectual disabilities	118
Both physical and mental disabilities	10
Intellectual, mental and physical disabilities	4
Unknown	3
Not answered	331
Total caseload	1105

Top Expenditures for the Disability Support Program (November 2007)

- 1) Vocational alternative support - 12.3%
- 2) Supervision - 12.03 %
- 3) Personal care - 11.57%
- 4) Respite - 10.21%
- 5) Day program - 8.84%

Top Expenditures for the Disability Support Program (Baker Report 2003)

- 1) Supervision - 15%
- 2) Personal care - 12%
- 3) Extended respite - 10%
- 4) Vocational alternative support - 9%
- 5) Behavioral care - 8%

Sources

Statistics Canada. *Participation and Activity Limitation Survey*, 2001 and 2006.

www.statcan.ca/english/freepub/89-628-XIE/2007002/provinces-en.htm

Statistics Canada. *Population Projections for Canada, Provinces and Territories, 2005-2031*.