



For ambulance billing information
contact Island EMS at 892-9995.

For more information
on ambulance services
visit *healthpei.ca* or call 368-6237.



Ambulance Service Rates in Prince Edward Island for Island Residents and Visitors



Health PEI

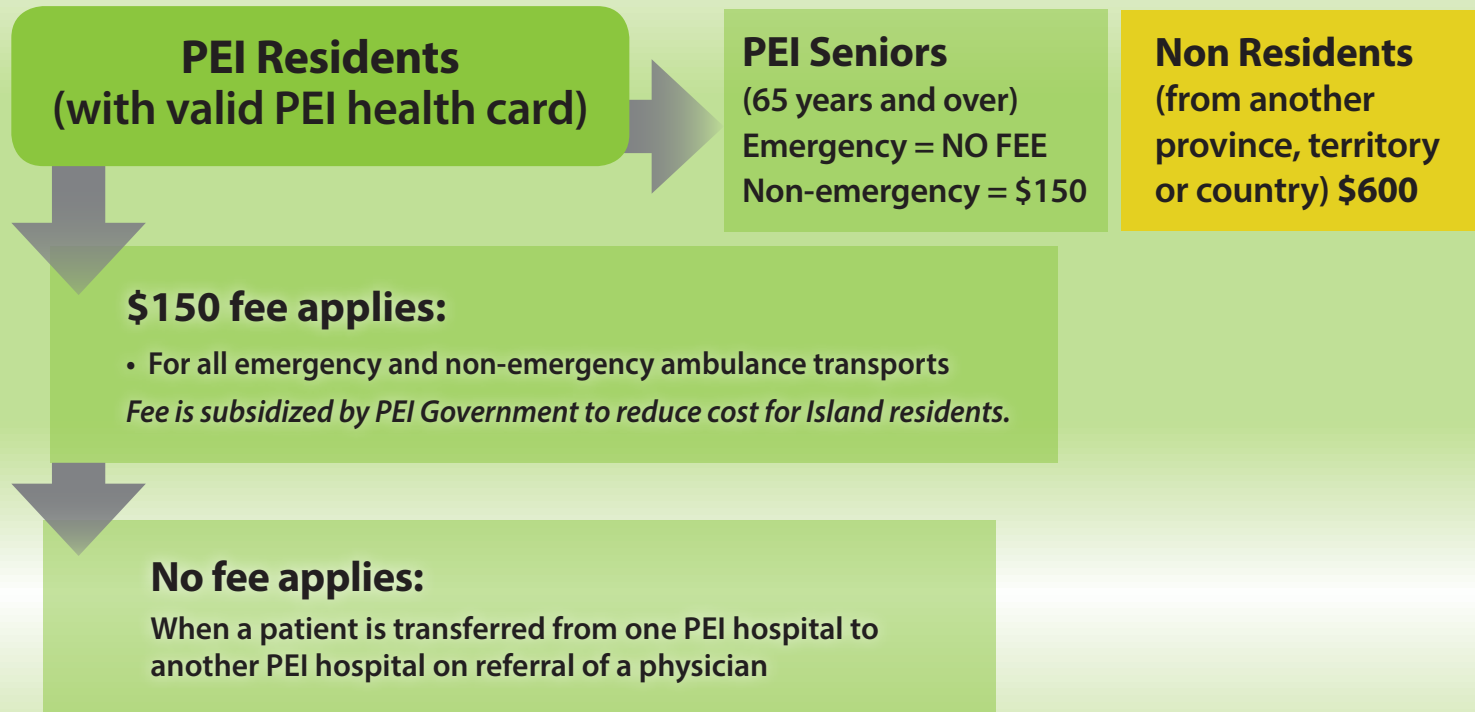
One Island Health System

In Prince Edward Island, ground ambulance service is operated by a privately owned company, Island EMS. The company is responsible for collecting ambulance user fees from Island residents and non-residents.

Did you know....

- The fee for ambulance service is **not** covered under medicare in any province
- If you are an Island resident traveling outside of PEI and you require an ambulance, you **will be charged** the applicable ambulance fee within the province you are visiting
- Visitors to PEI from other provinces or territories **will be charged** ambulance fees
- Ambulance fees **cannot** be reimbursed upon return to home province because this service is **not covered** under medicare
- Travel insurance can be purchased to cover this service so travelers should plan ahead even when travelling in Canada
- When you use an ambulance for a non emergency you are increasing wait times for patients in an emergency
- Ambulance service in Prince Edward Island is a provincial service available 24/7 with bases across the province in O’Leary, Alberton, Summerside, Charlottetown, Montague, and Souris.

In-province ground ambulance fees



Out-of-province ground ambulance fees

