



## Health PEI Strategic Plan 2013-2016

Health PEI Leadership Summit  
June 21, 2013

# Our Health System – How is it Organized?



**Policy**  
(Decides What)

**Department of Health and Wellness**  
Honorable Doug Currie, Minister

**Health PEI**

**Oversight**  
(Decides How)

**Health PEI Board**  
Dr. Donna Murnaghan, Chair

**Operations**  
(Delivers Services)

**Health PEI**  
Dr. Richard Wedge, CEO

Compliance and  
Monitoring Committee

Quality and Safety  
Committee

Public Engagement  
Committee

**Health PEI**

**One Island Health System**

# Key Governance Roles

- **Provide direction to the CEO / Organization** through the Strategic Plan
- **Monitor CEO Performance** by monitoring achievement of the Plan
- **Engage with the Public** to Inform the Plan over time
- **Monitor our own Performance** as a Board
- For the Board – the strategic plan is a key document

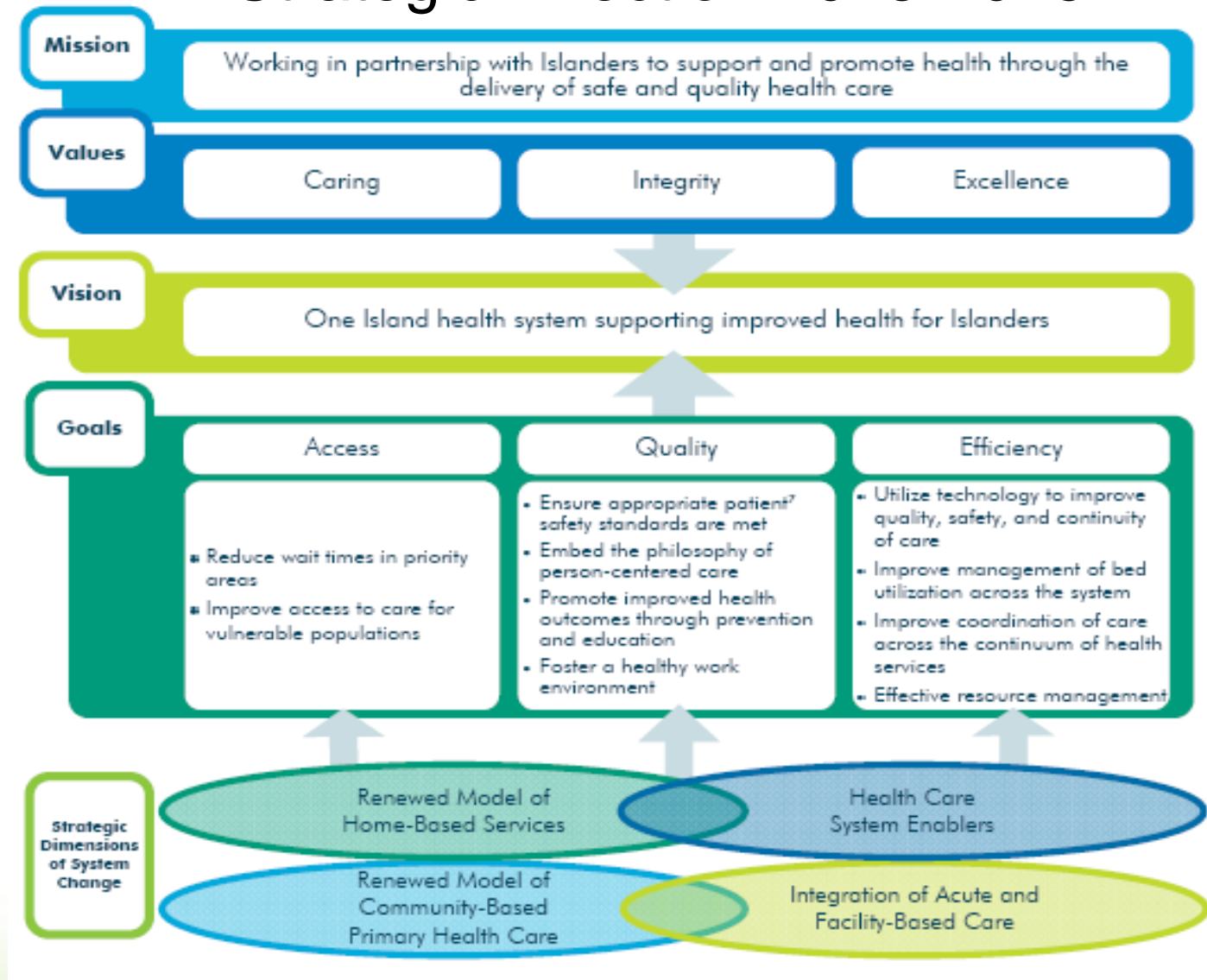
# Strategic Plan Purpose

- Health PEI's strategic plan outlines the organization's direction over the next three years (2013-16). The plan was prepared in accordance with the *Health Services Act, which requires a strategic plan every three fiscal years.*
- The document outlines Health PEI's renewed mission, vision, values, goals, and identifies the priorities to be pursued in an effort to respond to public and stakeholder needs.
- As the key document describing the overall strategic direction for Health PEI, it is intended to guide organizational decision-making and activities during 2013 to 2016.

# Key sources that informed the current plan

- *Public Input* – external consultations through surveys, focus, groups, and facilitated discussions
- *Input from internal and external stakeholders:*
  - ▶ *Health PEI Staff and Physicians* - surveys, facilitated discussions and focus groups
  - ▶ *The Department of Health and Wellness* – Provincial Health Plan and associated policies and directive
- *Reviews and Reports* - previous Strategic and Business Plans, Accreditation Canada Reports, Primary Health Care Survey, Physician Human Resources Report
- *Key Factors* - fiscal pressures, demographics, new health technologies, shortages of health professionals, and increased expectations

# Strategic Direction 2013-2016



# Vision Mission Values

## **VISION**

One Island health system supporting improved health for Islanders.

## **MISSION**

Working in partnership with Islanders to support and promote health through the delivery of safe and quality health care.

## **VALUES**

**CARING** -We treat everyone with compassion, respect, fairness, and dignity.

**INTEGRITY** -We collaborate in an environment of trust, communicate with openness and honesty, and are accountable through responsible decision-making.

**EXCELLENCE** - We pursue continuous quality improvement through innovation, integration, and the adoption of evidence-based practices.

# Strategic Dimensions of Change

**Health PEI will continue to invest and reallocate resources, and enhance programs and services in the following key dimensions:**

- **Renewed model of home-based services:** Extend and expand services to support Islanders to remain home longer and return home sooner.
- **Renewed model of community-based primary health care:** Improve access to primary health care services.
- **Health care system enablers:** Improve the effectiveness and efficiency of our resources, processes, and support services.
- **Integration of acute and facility-based care:** Further integration of acute and facility-based care, using beds and facility-based services more efficiently and effectively.



# Goals and Objectives

Goals	<i>Quality</i> We will provide safe, quality, and person-centered care and services	<i>Access</i> We will provide access to appropriate care by the right provider in the right setting	<i>Efficiency</i> We will optimize resources and processes to sustain a viable health care system
Objectives	Ensure appropriate patient safety standards are met	Reduce wait times in priority areas: Primary Health Care Providers Mental Health Services Addiction Services Long-Term Care Elective Surgical Services Emergency Services	Utilize technology to improve the quality, safety, and continuity of care
	Embed the philosophy of person-centered care		Improve management of bed utilization across the system
	Promote improved health outcomes through prevention and education	Improve access to care for vulnerable populations, including: Children with special needs The frail elderly and seniors with complex health needs	Improve the coordination of care across the continuum of health services
	Foster a healthy work environment		Effective resource management

# The Challenge

- For the people of PEI, **WE** must be successful in achieving our mission and our plan
- We are counting on you - The leadership team of Health PEI
- That is our challenge to you today



For further details on the strategic plan  
[www.healthpei.ca/strategicplan2013-16](http://www.healthpei.ca/strategicplan2013-16)

Comments or questions?