



A FIRST LOOK AT THE 2006 CENSUS OF POPULATION

Introduction

The first statistics available from the 2006 Census of Population, the population and dwelling counts, were released on March 13, 2007 by Statistics Canada. The official population count shows that there were 135,851 individuals residing on Prince Edward Island on May 15, 2006, though this number is subject to coverage adjustments to determine the actual population size¹. This is an increase of 557 persons, or 0.4 per cent, from the 2001 Census. Also in 2006 there were 62,753 private dwellings on Prince Edward Island of which 53,084 were occupied by their usual residents. Over the next two years Statistics Canada will be systematically releasing a wealth of data from the 2006 Census (see *Schedule of Release* in Appendix). This paper provides a brief overview of the first census results as they pertain to Canada, the Atlantic region, the Province as well as the various regions of Prince Edward Island.

Population Growth in Canada

The Canadian population grew more rapidly between 2001 and 2006 (+ 5.5 per cent) than in the previous intercensal period (+ 4.0 per cent) making it the largest increase among the G8 countries. This acceleration was due to an increase in international migration. The 2006 Census recorded a population of 31,612,897 for Canada, over 1.6 million more than in 2001. Almost all growth occurred in four provinces: Ontario's share was 46.7 per cent of the national growth; Alberta's share was 19.7 per cent, Quebec with 19.2 per cent and British Columbia with 12.8 per cent. More than 80 per cent of Canadians were living in urban areas, where most intercensal growth occurred. Canada's rural population increased by 1.0 per cent since 2001. Especially noteworthy was the fact that for the first time in history the census recorded a total territorial population of more than 100,000. Table 1 shows the population and dwelling counts for Canada, its provinces and territories.

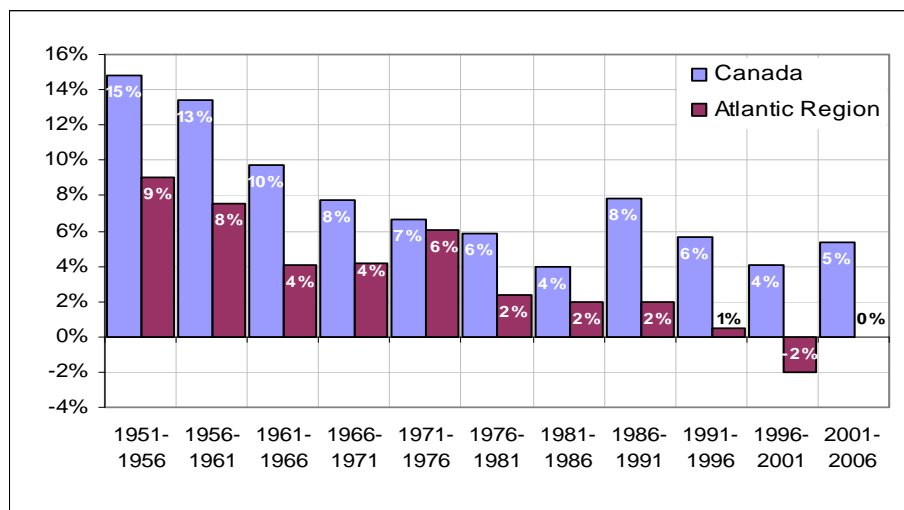
¹ The 2001 Census count for Prince Edward Island was adjusted upwards by 1.0 per cent by Statistics Canada, Demography Division. The revised estimates will be published in September 2008.

Table 1
CANADA, PROVINCES AND TERRITORIES
POPULATION AND DWELLING COUNTS

	Population			Private dwellings occupied by usual residents	Land area ('000s Sq. kms.)	Population density (Persons per sq. km.)
	2006	2001	Change			
Canada	31,612,897	30,007,094	5.4%	12,435,520	9,017.7	3.5
Newfoundland	505,469	512,930	-1.5%	197,245	370.5	1.4
P.E.I.	135,851	135,294	0.4%	53,084	5.7	23.9
Nova Scotia	913,462	908,007	0.6%	376,829	52.9	17.3
New Brunswick	729,997	729,498	0.1%	295,871	71.4	10.2
Quebec	7,546,131	7,237,479	4.3%	3,188,713	1,356.4	5.6
Ontario	12,160,282	11,410,046	6.6%	4,554,251	907.6	13.4
Manitoba	1,148,401	1,119,583	2.6%	448,766	552.4	2.1
Saskatchewan	968,157	978,933	1.1%	387,160	588.3	1.6
Alberta	3,290,350	2,974,807	10.6%	1,256,192	640.0	5.1
Brit. Columbia	4,113,487	3,907,738	5.3%	1,642,715	924.8	4.4
Yukon	30,372	28,674	5.9%	12,615	474.7	0.1
Northwest Territories	41,464	37,360	11.0%	14,224	1,140.8	0.0
Nunavut	29,474	26,745	10.2%	7,855	1,932.3	0.0

Diagram 1 shows the historical growth rates by intercensal periods from 1951 to 2006 for Canada and the Atlantic region. As can be seen, the growth rate for Canada had been in a general decline between 1951 and 1986, experienced an upsurge between 1986 and 1991, and has declined since then with the exception of 2001-2006.

Diagram 1
HISTORICAL GROWTH RATES OF CENSUS RESULTS FOR
CANADA AND THE ATLANTIC PROVINCES, 1951-2006



Source: Statistics Canada; data compiled by P.E.I. Provincial Treasury.

The growth rates for Atlantic Canada declined between 1951 and 1966, had a temporary upsurge in 1971-1976, went into absolute decline between 1996 and 2001 and recovered to no growth in 2001-2006. Diagram 1 further indicates that in every Census since 1951, the rate of growth for the Atlantic region has been below the national growth rate. The tendency for immigrants to locate in the large provinces as well as population movements from Atlantic Canada, are the main reasons for the lack of growth in the region.

The historical growth rates for Canada and each province and territory since 1956 are listed in Table 2. The census results show that the fastest growing provinces were British Columbia, Alberta, and Ontario. From 1956 to 2006 the slowest growing provinces were Saskatchewan and Newfoundland & Labrador. The remaining provinces were below the national growth rate with Newfoundland, New Brunswick, Saskatchewan and the Yukon Territory in absolute decline between 1996 and 2006. Growth in Alberta accelerated significantly between 1996 and 2006 compared to the period 1986-1996, whereas all other provinces experienced reduced growth.

Table 2
CANADA, PROVINCES AND TERRITORIES
POPULATION GROWTH BETWEEN CENSUSES

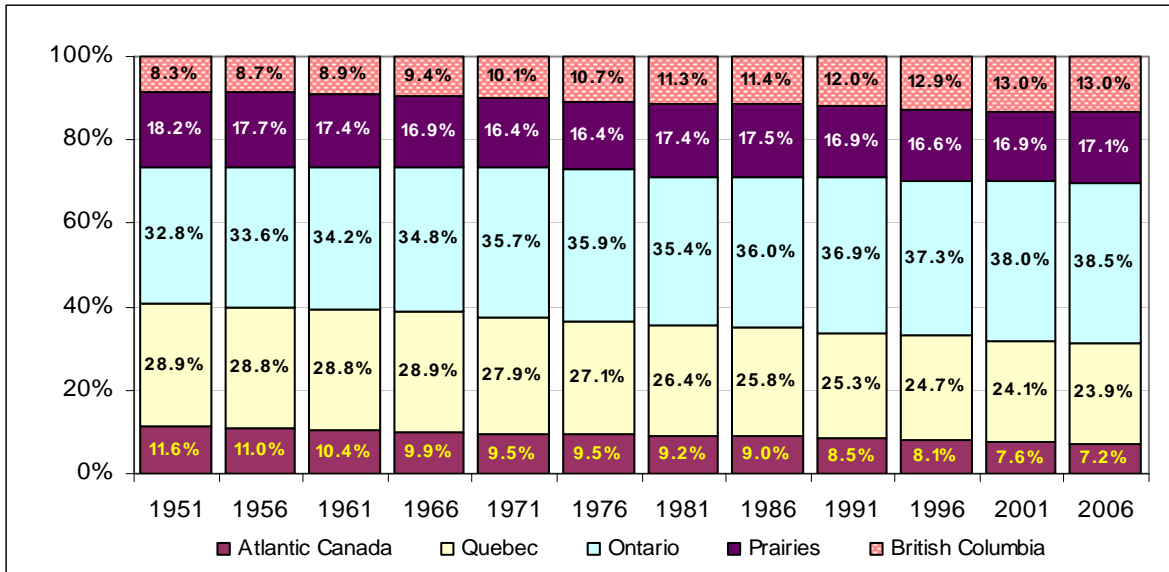
	<u>1956-66</u>	<u>1966-76</u>	<u>1976-86</u>	<u>1986-96</u>	<u>1996-06</u>	<u>2001-06</u>	<u>1956-06</u>
Canada	24.5%	14.9%	10.1%	14.0%	9.6%	5.4%	96.6%
Newfoundland	18.9%	13.0%	1.9%	-2.9%	-8.4%	-1.5%	21.8%
P.E.I.	9.3%	8.9%	7.1%	6.2%	1.0%	0.4%	36.8%
Nova Scotia	8.8%	9.6%	5.4%	4.1%	0.5%	0.6%	31.5%
New Brunswick	11.2%	9.8%	4.8%	4.0%	-1.1%	0.1%	31.6%
Quebec	24.9%	7.8%	4.8%	9.3%	5.7%	4.3%	63.0%
Ontario	28.8%	18.7%	10.1%	18.1%	13.1%	6.6%	125.0%
Manitoba	13.3%	6.1%	4.1%	4.8%	3.1%	2.6%	35.1%
Saskatchewan	8.5%	-3.6%	9.6%	-1.9%	-2.2%	-1.1%	9.9%
Alberta	30.3%	25.6%	28.7%	14.0%	22.0%	10.6%	193.0%
Brit. Columbia	34.0%	31.6%	16.9%	29.2%	10.4%	5.3%	194.1%
Yukon	18.0%	51.8%	7.6%	30.9%	-1.3%	5.9%	149.2%
N.W.T.& Nunavut	48.8%	48.3%	22.6%	23.3%	10.1%	10.7%	267.3%

Diagram 2 (see next page) shows the distribution of the population for five regions of Canada (Atlantic, Quebec, Ontario, Prairies and British Columbia) from 1951 to 2006. The Atlantic regional share of the Canadian population has steadily declined from 11.6 per cent in 1951 to 7.2 per cent in 2006 (Prince Edward Island's population share dropped from 0.70 per cent in 1951 to 0.43 per cent in 2006). Quebec and Ontario accounted for 62.4 per cent of the Canadian population in 2006.

Quebec's population has declined by 5 percentage points from 28.9 per cent in 1951 to 23.9 per cent in 2006. Ontario's share increased from 32.8 per cent in 1951 to 38.5 per cent in 2006. As a result of strong growth in Alberta, the decline in the Prairie provinces' share of the Canadian population was somewhat dampened: it dropped from 18.2 per cent in 1951 to 17.1 per cent in 2006. Excluding Alberta, the combined share of Manitoba and Saskatchewan dropped from 11.5 per cent in 1951 to 6.7 per cent in 2006. British Columbia grew by 4.7 percentage points between 1951 and 2006 when it formed 13.1 per cent of the Canadian population.

Diagram 2

**POPULATION OF THE REGIONS OF CANADA
AS A PERCENTAGE OF CANADA (excluding Territories)**

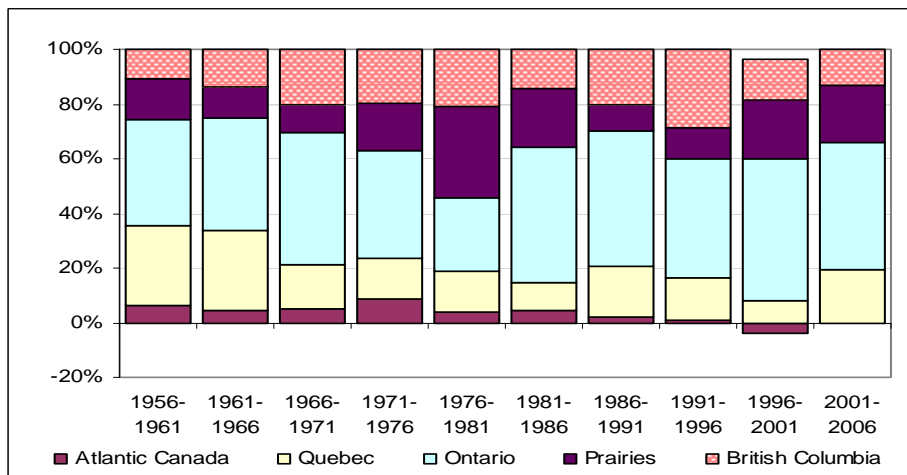


Source: Statistics Canada; data compiled by P.E.I. Provincial Treasury.

Diagram 3 shows the contribution of each region to Canadian population growth by five-year periods from 1956 to 2006. The contribution attributable to the Atlantic region reached its highest point between 1971 and 1976 when it was 8.7 per cent. However, between 1996 and 2001 its contribution became negative at -4.1 per cent. There was no growth recorded between 2001 and 2006. The major growth area for the past fifty years has been Ontario, whose annual contribution to growth averaged 43.4 per cent. The exception to this was the 1976-1981 period when the Prairies surpassed Ontario's 26.7 per cent contribution by 6.7 percentage points, mainly due to the oil boom in those years.

Diagram 3

REGIONAL CONTRIBUTION TO POPULATION GROWTH IN CANADA



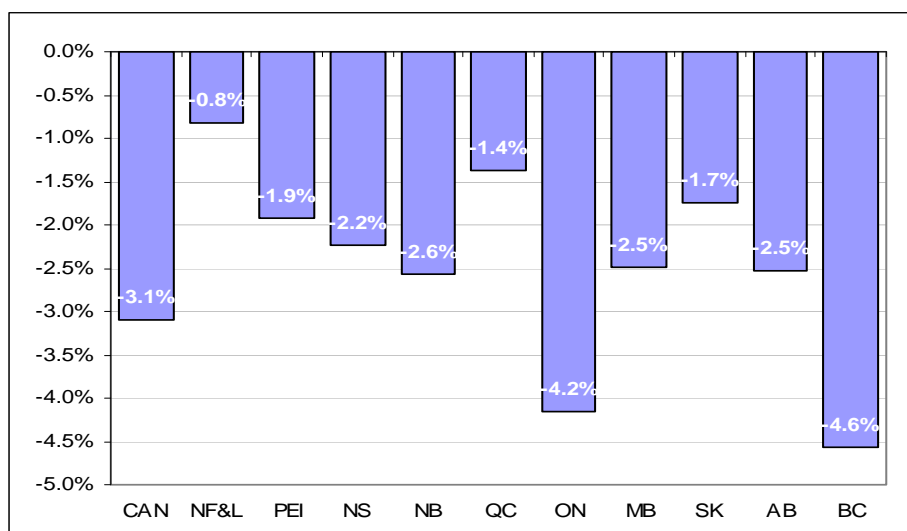
Source: Statistics Canada; data compiled by P.E.I. Provincial Treasury.

Annual Estimates of Population

Although Statistics Canada conducts a Census of Population every five years, they also estimate the population for each province and territory on an annual and quarterly basis. It is interesting to compare Statistics Canada's actual census results to their estimates of population for the same timeframe to see whether there are major differences. The percentage differences between the May 15, 2006 Census results and the July 1, 2006 population estimates are shown in Diagram 4. The 2006 Census count of 135,851 for Prince Edward Island is 1.9 per cent below the July 1, 2006 population estimate of 138,519. With the exception of Newfoundland & Labrador, Quebec and Saskatchewan, the differences for all other provinces are significantly greater, the largest differentials being Ontario at -4.2 per cent and British Columbia at -4.6 per cent.

Diagram 4

2006 CENSUS RESULTS COMPARED TO 2006 POPULATION ESTIMATES



Source: Statistics Canada; data compiled by P.E.I. Provincial Treasury.

The annual estimates of population are revised after every census, taking into consideration the census count adjusted for estimated coverage errors, natural increases/decreases and net migration. The adjustment for census coverage errors by Statistics Canada takes into account net undercoverage of the census. Undercoverage refers to the number of persons who were missed in the census but should have been enumerated. This is netted against 'overcoverage' of the census, i.e. the number of persons enumerated more than once in a census.

Table 3 shows Statistics Canada's present estimated population for Prince Edward Island with 2002 to 2006 based on the 2001 Census. These population statistics will be revised in the fall of 2008.

Table 3
ESTIMATED ANNUAL POPULATION (JULY 1)
PRINCE EDWARD ISLAND, 1996 – 2006
 (Subject to revision)

	<u>Population</u>	<u>Percentage change</u>
1996 (c)	135,751	
1997	136,109	0.3%
1998	135,819	-0.2%
1999	136,296	0.4%
2000	136,486	0.1%
2001 (c)	136,672	0.1%
2002	136,934	0.2%
2003	137,325	0.3%
2004	137,876	0.4%
2005	138,176	0.2%
2006 (c)	138,519	0.2%

(c) census year

Source: Statistics Canada, Demography Division; data compiled by P.E.I. Provincial Treasury.

Population Growth on Prince Edward Island

a) Population change by county

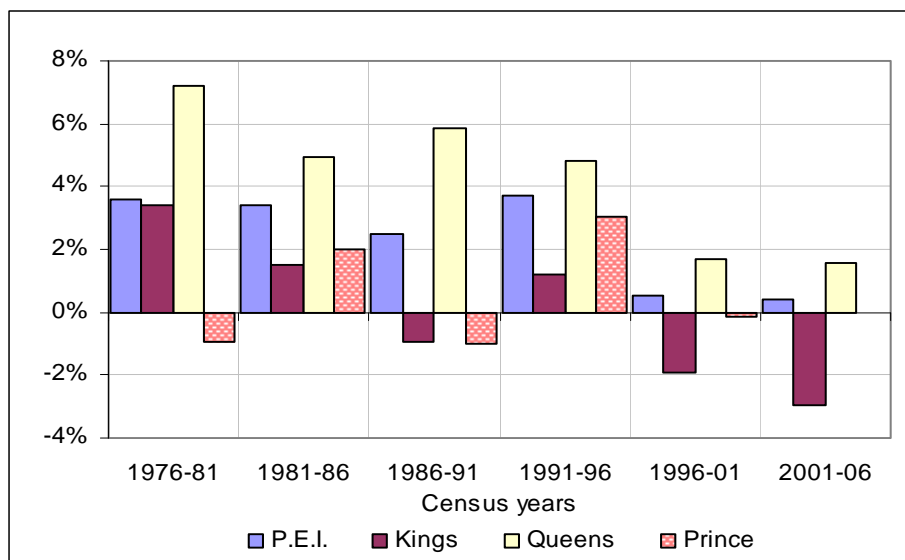
The 2006 Census counts for the three counties are shown in Table 4, together with 2001 and 1996 Census results for comparison. Queens County increased by 1,125 between 2001 and 2006. Prince County remained the same as in 2001, while Kings County lost population between those years. The Queens County growth rate of 1.6 per cent was well above the provincial rate of 0.4 per cent, but significantly less than the Canadian rate of increase at 5.4 per cent.

Table 4
CENSUS COUNTS PRINCE EDWARD ISLAND AND ITS COUNTIES
1996, 2001 AND 2006

	<u>1996</u>	<u>2001</u>	<u>2006</u>	<u>Net Gain/Loss</u>			<u>Percentage Growth/Decline</u>		
				<u>1996-01</u>	<u>2001-06</u>	<u>1996-06</u>	<u>1996-01</u>	<u>2001-06</u>	<u>1996-06</u>
P.E.I.	134,557	135,294	135,851	737	557	1,294	0.5	0.4	1.0
Kings County	19,561	19,180	18,608	-381	-572	-953	-1.9	-3.0	-4.9
Queens County	70,430	71,619	72,744	1,189	1,125	2,314	1.7	1.6	3.3
Prince County	44,566	44,495	44,499	-71	4	-67	-0.2	0.0	-0.2

Source: Statistics Canada; data compiled by P.E.I. Provincial Treasury.

Diagram 5
POPULATION GROWTH RATES
PRINCE EDWARD ISLAND AND COUNTIES



Source: Statistics Canada; data compiled by P.E.I. Provincial Treasury.

Diagram 5 shows the quinquennial population growth rates for Prince Edward Island and its three counties from 1976-1981 to 2001-2006. As can be seen the growth rate for Queens County has been consistently above the growth rate for the province and has averaged 4.3 per cent over the past thirty years, compared to a provincial average growth of 2.4 per cent. The growth rate for the other counties has varied a great deal over time.

The rate of population growth declined markedly from 1996-2001 onward compared to previous periods. Queens County is the only county to consistently experience positive growth since the 1930s. Consequently the dominance of Queens County has steadily increased. In 1951 it contained 43.3 per cent of the Island population. In 2006 its share had become 53.5 per cent.

b) Population change by region

For the purpose of this discussion, the province has been divided into the four health regions and eight sub-regions. Table 5 (see next page) shows the population of each of these regions and sub-regions for the census years 1996, 2001 and 2006. One can see that during the period 1996-2006 the population of the Queens Health Region increased by 3.8 per cent, followed by the East Prince Health Region at 1.7 per cent.

Particularly noteworthy is the case of rural Queens, where strong population growth totaled 5.6 per cent during the last ten years, making it the third highest growth region in the province. The highest, in percentage terms, was Stratford with 20.7 per cent growth, followed by Cornwall with a ten-year increase of 9.0 per cent. In contrast, Charlottetown's population fell during the last two censuses for a total decline of 1.1 per cent.

Table 5**POPULATION OF THE HEALTH REGIONS AND SUB-REGIONS OF
PRINCE EDWARD ISLAND, 1996, 2001 and 2006**

	1996	2001	2006	Percentage change		
	<u>Census</u>	<u>Census</u>	<u>Census</u>	<u>1996-01</u>	<u>2001-06</u>	<u>1996-06</u>
W. Prince H.R.	14,546	14,261	13,954	-2.0%	-2.2%	-4.1%
E. Prince H.R.	32,729	32,997	33,282	0.8%	0.9%	1.7%
<i>Summerside</i>	<i>14,525</i>	<i>14,654</i>	<i>14,500</i>	<i>0.9%</i>	<i>-1.1%</i>	<i>-0.2%</i>
<i>Rural East Prince</i>	<i>18,204</i>	<i>18,343</i>	<i>18,782</i>	<i>0.8%</i>	<i>2.4%</i>	<i>3.2%</i>
Queens H.R.	65,426	66,686	67,932	1.9%	1.9%	3.8%
<i>Charlottetown</i>	<i>32,531</i>	<i>32,245</i>	<i>32,174</i>	<i>-0.9%</i>	<i>-0.2%</i>	<i>-1.1%</i>
<i>Stratford</i>	<i>5,869</i>	<i>6,314</i>	<i>7,083</i>	<i>7.6%</i>	<i>12.2%</i>	<i>20.7%</i>
<i>Cornwall</i>	<i>4,291</i>	<i>4,412</i>	<i>4,677</i>	<i>2.8%</i>	<i>6.0%</i>	<i>9.0%</i>
<i>Rural Queens</i>	<i>22,735</i>	<i>23,715</i>	<i>23,998</i>	<i>4.3%</i>	<i>1.2%</i>	<i>5.6%</i>
Kings H.R.	21,856	21,350	20,683	-2.3%	-3.1%	-5.4%
<i>South Kings</i>	<i>14,383</i>	<i>14,164</i>	<i>13,732</i>	<i>-1.5%</i>	<i>-3.0%</i>	<i>-4.5%</i>
<i>East Kings</i>	<i>7,473</i>	<i>7,186</i>	<i>6,951</i>	<i>-3.8%</i>	<i>-3.3%</i>	<i>-7.0%</i>
Total P.E.I.	134,557	135,294	135,851	0.5%	0.4%	1.0%

Source:

Statistics Canada; data compiled by P.E.I. Provincial Treasury.

In the West Prince Health Region the population continued to decline: from -2.0 per cent in 1996-2001 to -2.2 per cent in 2001-2006 for a ten-year population decline of -4.1 per cent. Population growth in the Kings region also fell during two consecutive censuses: from -2.3 per cent in 1996-2001 to -3.1 per cent in 2001-2006 for a ten-year population decline of -5.4 per cent.

Map 1 (see Appendix) shows population growth for the four Health Regions of Prince Edward Island between 1996 and 2006. The two central health regions, East Prince and Queens, showed positive growth during this period, while Kings and West Prince experienced population declines. In the Queens Health Region rapid growth areas were Stratford (20.7 per cent), Cornwall (9.0 per cent) and rural Queens (5.6 per cent).

Fifty-two per cent of the Island population lived in rural areas in 2006, a proportion that has little changed since the 1991 Census. The total population of the major urban centres on Prince Edward Island (Charlottetown, Stratford, Cornwall and Summerside) increased by 1.4 per cent between 2001 and 2006, while most of the Island's 1.1 per cent growth in the rural population took place in the fringe areas around Charlottetown. However, 2001-2006 population growth slowed throughout Prince Edward Island, and Charlottetown and Summerside themselves were in decline.

c) Lots and Municipalities

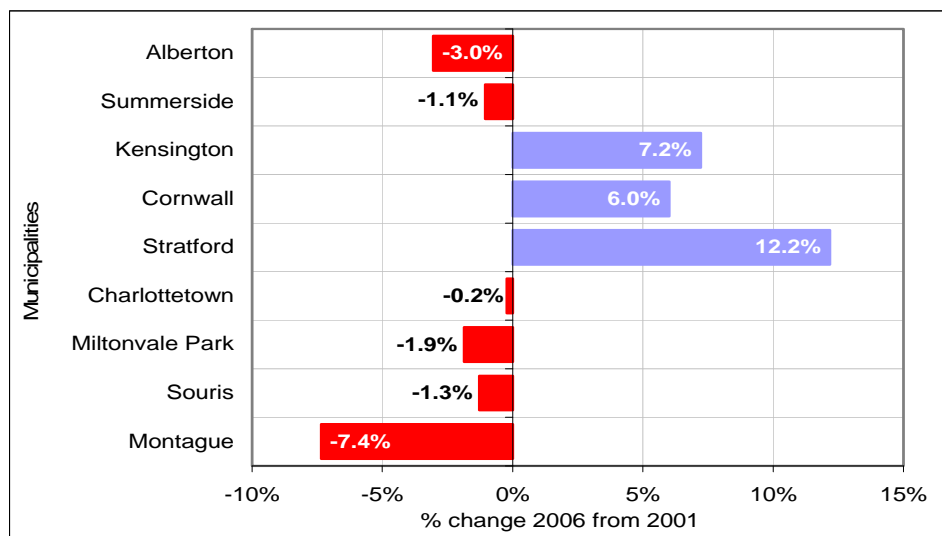
The following section examines population growth for Prince Edward Island at the Census Subdivision (CSD) level. Commonly known as lots (also known as townships) and municipalities (see Table in Appendix) there are 110 CSDs on Prince Edward Island. The 2006 Census shows that 41 per cent of all CSDs on Prince Edward Island experienced some degree of population growth compared to 54 per cent in the previous census. Map 2 (see Appendix) shows the 45 lots and municipalities whose population increased between 2001 and 2006 (marked in green) as well as the 65 CSDs that declined during that period (marked in red).

Among the 45 CSDs with positive growth (59 CSDs in 2001), 10 are found in Kings County (12 CSDs in 2001), 17 are located in Queens County (28 in 2001), while 18 were in Prince County (19 in 2001). Stratford experienced the largest population growth among Island municipalities: from 6,314 persons in 2001 to 7,083 persons in 2006, an increase of 12.2 per cent. Among the townships Lot 65 showed the largest absolute growth on the Island: from 1,829 persons in 2001 to 2,051 in 2006, an increase of 222 persons. Lot 17 had the largest percentage growth at 25.7 per cent during that period.

Out of a total of 65 CSDs in decline at the time of the 2006 Census (51 CSDs in 2001), 20 were located in Kings County (18 in 2001), 22 were found in Queens County (11 in 2001), while the remaining 23 were in Prince County (22 in 2001). Maps 3 and 4 (see Appendix) show the growth and decline in the province at the time of the 2001 and 1996 Censuses.

Diagram 6 identifies population growth in Island municipalities with population over 1,000 during the period 2001-2006. As previously mentioned, Stratford experienced the largest growth at 12.2 per cent, while Montague declined the most at -7.4 per cent. The population of Summerside fell by 1.1 per cent, while Charlottetown declined by 0.2 per cent. The population of these nine municipalities totals 65,197, which represents 48 per cent of the Island's total population.

Diagram 6
POPULATION GROWTH OF ISLAND MUNICIPALITIES
WITH POPULATION OVER 1,000, 2001-2006



Source: Statistics Canada; data compiled by P.E.I. Provincial Treasury.

Note: most population data mentioned in this paper are **Census counts**, which are NOT subject to review. However, the **population estimates** in *Section 3. Annual Estimates of Population* (page 5-6) are subject to revision once adjustments for census coverage errors are published by Statistics Canada in the fall of 2008. More information regarding the *2006 Census Population and Dwelling Counts* can be found at:

http://www12.statcan.ca/english/census06/release/release_popdwell.cfm

POPULATION CHANGE AND DISTRIBUTION BY AGE AND GENDER

Introduction

This section examines the population growth and changes in population shares by age and gender for Canada and its regions. For the purpose of this discussion, the population has been divided into four age groups: pre-school (0-4 years), school-age (5-14 years), working age (15-64 years) and seniors (65 years and over).

The progressive aging of the population is largely attributable to two factors. First, the life expectancy of Canadians increased appreciably during the 20th century and now stands at 82.5 years for women and 77.7 years for men. As a result of that increase, an increasing number of Canadians are reaching the age of 65, and once this age is attained, they also live longer. In 2004, the age where we observed the largest number of deaths was 84 years for women and 82 years for men. Second, the fertility rate, which has averaged 1.6 children per woman over the last 30 years, is below the replacement level of 2.1.

To illustrate: the most striking event of the 2006 Census was the fact that there were more seniors and fewer children during the period 2001-2006. According to Statistics Canada,

“The number of people aged 65 and over increased by more than 446,700 compared with 2001 (+11.5%), topping the 4 million mark for the first time (4.3 million). This is nearly four times as many seniors as in the first quinquennial census in 1956. In contrast, the under-15 population declined by almost 146,000 (-2.5%) to 5.6 million between 2001 and 2006. This is the second consecutive intercensal period in which the under-15 population has declined, as the last increase was in the 1991 to 1996 period.”

The median age (one indicator of an aging population, which divides the population into two groups of equal size) has been rising steadily since 1966, reaching 39.5 years in 2006. That is an increase of 1.9 year from 2001, the third largest intercensal increase in the last 50 years, after the ones observed between 1996 and 2001 and between 1981 and 1986. Statistics Canada expects the median age to keep rising in the future possibly exceeding 44 years by 2031.

Among the provinces, Nova Scotia's population was the oldest in Canada with a median age of 41.8 years, while Alberta's has the youngest at 36 years. The median age for Prince Edward Island was 40.8 years.

CANADA AND THE PROVINCES

Table 6 (see next page) illustrates the population shares and changes in the numbers of the age groups briefly examined below.

AGE GROUP: 0-4 YEARS (PRE-SCHOOL)

In 2006 there were 1,690,540 Canadian children in this age group, down by 0.3 per cent from 2001. Among the provinces Prince Edward Island and Nova Scotia experienced the largest decline (-11.4 per cent), while Alberta was the only province showing an increase (8.7 per cent) in this age group.

Proportionately this age group made up 5.3 per cent of the Canadian population, down from the 5.7 per cent recorded in the 2001 Census. The largest share occurred in Alberta (6.2 per cent), while the smallest share was recorded in Newfoundland (4.5 per cent)...

AGE GROUP: 5-14 YEARS (SCHOOL-AGE)

Between 2001 and 2006 the number of children in Canada in the 5-14 years age group fell by 3.5 per cent to 3,889,295. The largest population decline in this age group occurred in Newfoundland and Labrador (-13.4 per cent), followed by Nova Scotia (-11.2 per cent) and Saskatchewan (-11.0 per cent).

The national population share of this age group fell from 13.4 per cent in 2001 to 12.3 per cent in 2006. Manitoba's share was the highest in the country at 13.7 per cent, while Newfoundland had the smallest proportion at 11.0 per cent in 2006.

The decline in the number of 0-14 year olds in Canada was offset by growth in the population 15 years and older.

AGE GROUP: 15-64 YEARS (WORKING AGE)

The number of working-age Canadians rose to 21,697,805 in 2006, an increase of 6.4 per cent from 2001. The only province in decline was Newfoundland and Labrador, where the 15-64 year old population dropped by 1.1 per cent. Alberta had the largest growth in this age group at 12.5 per cent.

Table 6

**POPULATION SHARES AND POPULATION CHANGE, 2001-2006
CANADA AND REGIONS (in percent)**

<u>Province/Region:</u>	2001 CENSUS				2006 CENSUS				2006/2001 POP. CHANGE			
	<u>0-4 years</u>	<u>5-14 years</u>	<u>15-64 years</u>	<u>65 years and over</u>	<u>0-4 years</u>	<u>5-14 years</u>	<u>15-64 years</u>	<u>65 years and over</u>	<u>0-4 years</u>	<u>5-14 years</u>	<u>15-64 years</u>	<u>65 years and over</u>
Canada	5.7	13.4	68.0	13.0	5.3	12.3	68.6	13.7	-0.3	-3.5	6.4	11.5
Atlantic Region:	5.1	12.8	68.6	13.4	4.6	11.4	69.2	14.7	-9.8	-11.0	0.9	9.5
<i>Newfoundland</i>	4.8	12.5	70.4	12.3	4.5	11.0	70.6	13.9	-7.9	-13.4	-1.1	11.4
<i>Prince Edward Island</i>	5.6	14.1	66.6	13.7	4.9	12.7	67.5	14.9	-11.4	-9.4	1.8	8.7
<i>Nova Scotia</i>	5.2	12.9	67.9	13.9	4.6	11.4	68.8	15.1	-11.4	-11.2	2.0	9.2
<i>New Brunswick</i>	5.2	12.7	68.6	13.6	4.7	11.5	69.1	14.7	-8.6	-9.3	0.7	8.8
Quebec	5.2	12.7	68.9	13.3	5.0	11.6	69.1	14.3	-0.1	-4.2	4.6	12.6
Ontario	5.9	13.7	67.5	12.9	5.5	12.7	68.3	13.6	-0.1	-1.4	7.7	12.0
Prairie Region:	6.3	14.6	67.1	12.1	6.1	13.2	68.4	12.3	3.2	-3.3	8.7	8.5
<i>Manitoba</i>	6.3	14.6	65.2	14.0	5.9	13.7	66.3	14.1	-3.6	-3.7	4.4	3.5
<i>Saskatchewan</i>	6.2	14.9	63.8	15.1	5.9	13.4	65.2	15.4	-5.7	-11.0	1.1	1.2
<i>Alberta</i>	6.3	14.5	68.9	10.4	6.2	13.0	70.1	10.7	8.7	-0.5	12.5	14.6
British Columbia	5.3	12.8	68.3	13.6	4.9	11.6	68.9	14.6	-1.8	-4.5	6.2	12.5

Source: Statistics Canada; data compiled by P.E.I. Provincial Treasury.

The national population share increased from 68.0 per cent in 2001 to 68.6 per cent in 2006. Newfoundland and Labrador had the largest proportion of 15-64 year olds (70.6 per cent), while the lowest share occurred in Saskatchewan (65.2 per cent).

Statistics Canada reports that *“Of all the age groups within the 15 to 64 age group, 55 to 64 year olds grew the fastest between 2001 and 2006 (+28%). This particular age group, some of whose members are older workers, grew only half as rapidly (+15%) between 1996 and 2001. The rapid expansion experienced since 2001 is due to the fact that the first baby-boomers entered this age group over the past five years.*

As a result, the number of people aged 55 to 64 has never been so high, at nearly 3.7 million in 2006. Today, they make up 16.9% of the working-age population, or about one potential worker in six, compared with 14.1% in 2001. It is expected that the number of people aged 55 to 64 will continue to grow over the next few years and could represent more than 20% of the working-age population in 2016, when more than one in five potential workers will be in the 55 to 64 age group.

With workers generally leaving the workforce between the ages of 55 and 64, Canada has never had so many people close to retirement. The ratio of the 15 to 24 age group, people about to enter the labour market, to the 55 to 64 age group, people approaching retirement, was 1.1 in 2006. It means that for each person at the age where people leave the workforce, there was just over one person at the age where people are entering the labour force. In 1976, the ratio was 2.3. According to the population projections' medium-growth scenario, in about 10 years Canada may have more people at the age where they can leave the labour force than people at the age where they can begin working.”

AGE GROUP: 65 YEARS AND OLDER (SENIOR)

In 2006 there were 4,335,245 Canadians in this age group, 6.4 per cent more than there were in 2001, with Alberta showing the largest increase (14.6 per cent) and Saskatchewan having the smallest increase (1.2 per cent).

As a result of the increase in the number of seniors since 2001, their proportion relative to the total population reached a record 13.7% in 2006. That proportion, the best indicator of the aging of Canada's population, has been rising steadily since 1966, when it was 7.7%. Saskatchewan had the highest proportion of seniors at 15.4 per cent of its population and Alberta had the smallest share at 10.7 per cent.

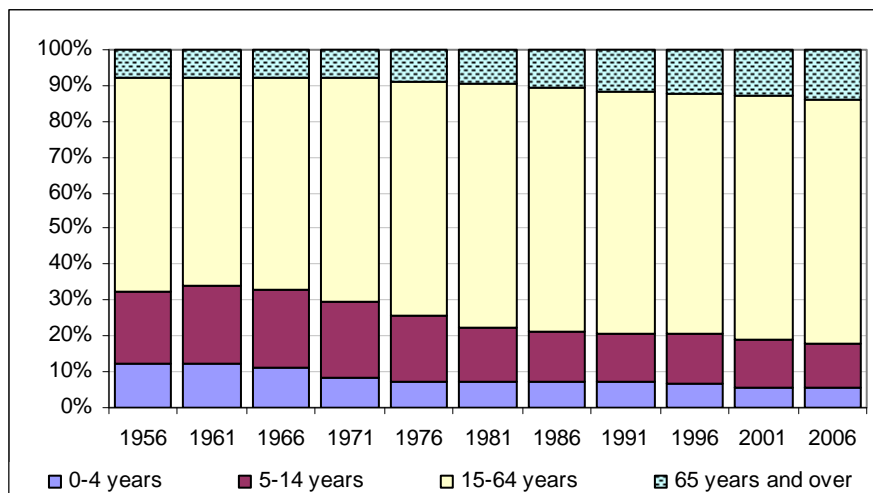
FIFTY YEARS OF POPULATION CHANGE: 1956-2006

CANADA

Diagram 7 shows the composition of the Canadian population from 1956 to 2006 by five-year periods: fifty years of change. The most dramatic development during this period was the drop in the proportion of young Canadians in the population. While in 1956 12.3 per cent of the population was less than 5 years old and 20.2 per cent was between the ages of 5 and 14 years, in 2006 these shares had fallen dramatically to only 5.3 per cent and 12.3 per cent, respectively. In contrast to these declines, the share of 15-64 year old persons increased from 59.8 per cent in 1956 to 68.6 per cent in 2006, the largest proportion of working-age people during the last fifty years. The proportion of seniors almost doubled: from 7.7 per cent of the population in 1956 to 13.7 per cent in 2006.

Diagram 7

CENSUS POPULATION DISTRIBUTION CANADA, 1956-2006



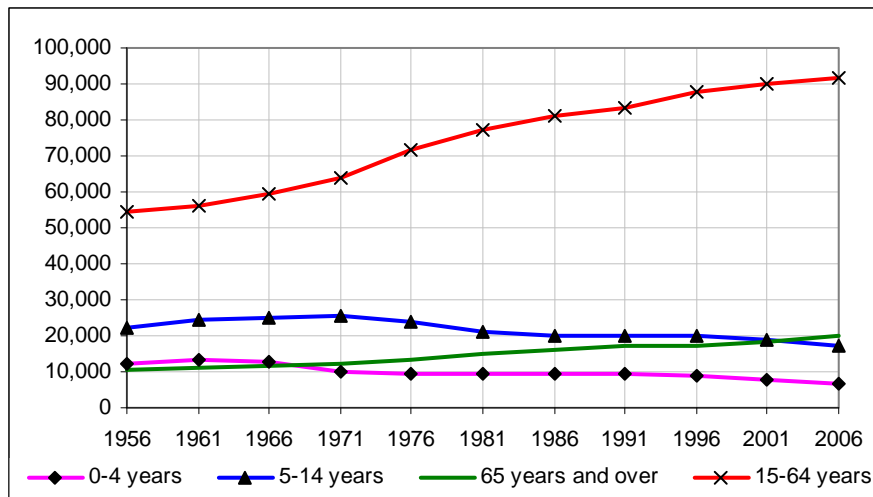
Source: Statistics Canada; data compiled by P.E.I. Provincial Treasury.

PRINCE EDWARD ISLAND

Prince Edward Island experienced dramatic changes in its population make-up during the last fifty years. As illustrated in Diagram 8 (see next page), the number of children in the 0-4 years age group rose from 12,285 in 1956 to its peak of 13,221 in 1961 before declining to 6,690 children in 2006, a decrease of 45.5 per cent from 1956. Representing 12.4 per cent of the Island population in 1956, fifty years later this share had fallen to 4.9 per cent. The number of children between the ages of 5 and 14 years fell from 22,349 persons in 1956 to 17,295 in 2006, a decline

of 22.6 per cent. Its share fell from 22.5 per cent of the population in 1956 to 12.7 per cent in 2006. In contrast to this decline among young people, the number of persons between the ages of 15 and 64 years rose from 54,301 in 1956 to 91,670 in 2006, an increase of 68.8 per cent. This working-age group represented 54.7 per cent and 67.5 per cent of the total population, respectively. The number of Island seniors steadily climbed from 10,350 in 1956 to 20,185 in 2006, an increase of 95.0 per cent and accounting for 10.4 and 14.9 per cent of the population, respectively.

Diagram 8
P.E.I. CENSUS POPULATION 1956-2006
(by age groups)



Source: Statistics Canada; data compiled by P.E.I. Provincial Treasury.

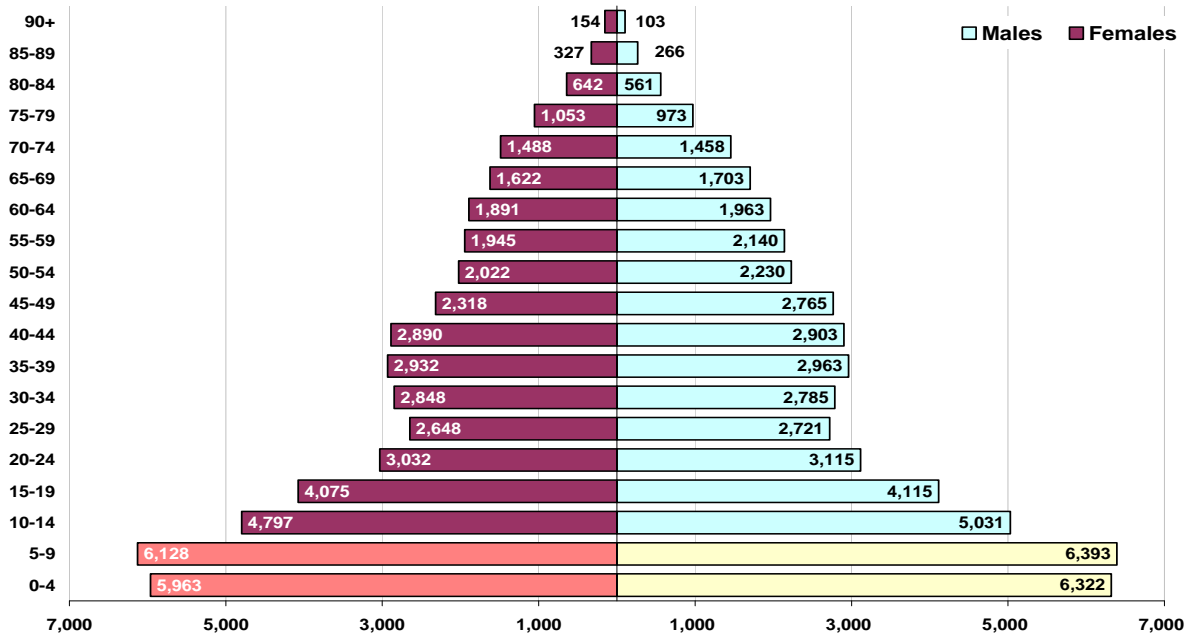
The population pyramids for 1956 and 2006, shown in Diagrams 9 and 10 (see next page), provide a graphic illustration of the Island population distribution by age and gender. Noteworthy are two segments of the population: the ‘baby-boom’ generation and the population 90 years and over. The baby-boom refers to that segment of the population that was born between 1946 and 1965. The age groups that make up the baby-boom generation have been highlighted in Diagrams 2 and 3.

In 2001 there were 41,450 baby-boomers (ranging in age from 35 to 54 years in 2001) representing 30.6 per cent of the Island population. Five years later their number (between the ages of 40 and 59 in 2006) had increased to 41,815 with a share in the population of 30.8 per cent. The number of persons 90 years and older reached 1,005 in 2006, up by 16.9 per cent from 2001. This represented a population share of 0.7 per cent, up slightly from 2001.

The population pyramid in Diagram 11 (see page 17) further illustrates the major change in the Island population distribution during the last fifty years. The Island population increased by 36.8 per cent from 99,285 persons in 1956 to 135,850 persons in 2006. This compares to a national population growth rate of 96.6 percent.

Diagram 9

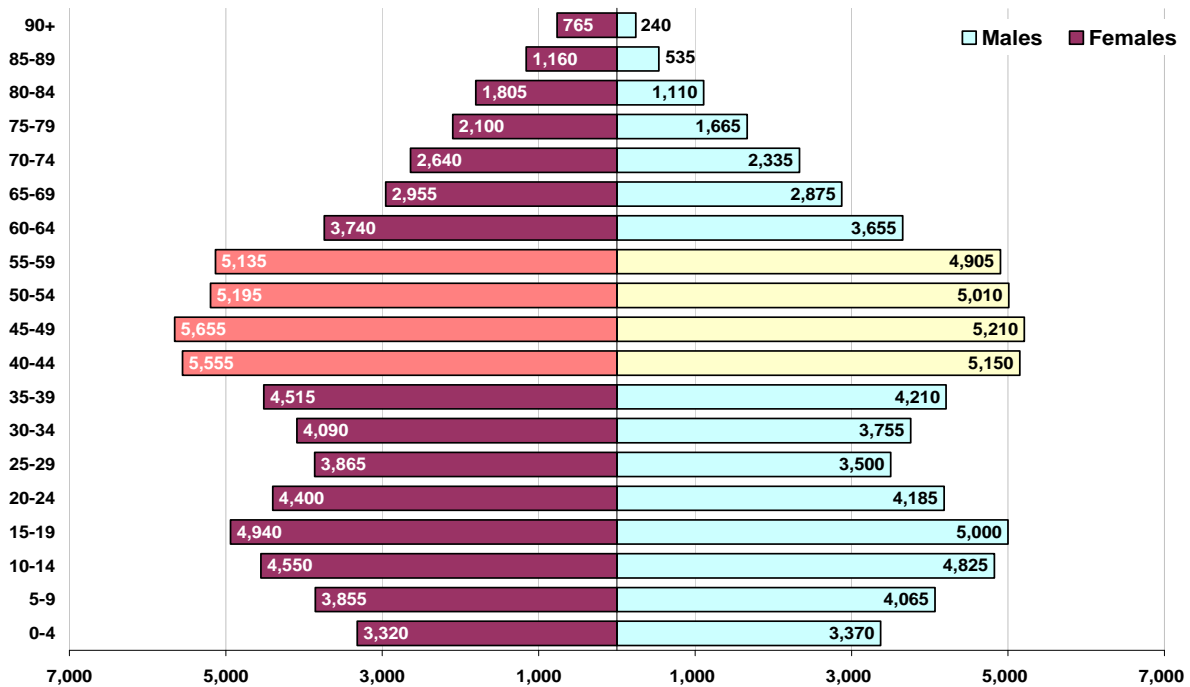
P.E.I. POPULATION DISTRIBUTION, 1956 CENSUS



Source: Statistics Canada; data compiled by P.E.I. Provincial Treasury.

Diagram 10

P.E.I. POPULATION DISTRIBUTION, 2006 CENSUS



Source: Statistics Canada; data compiled by P.E.I. Provincial Treasury.

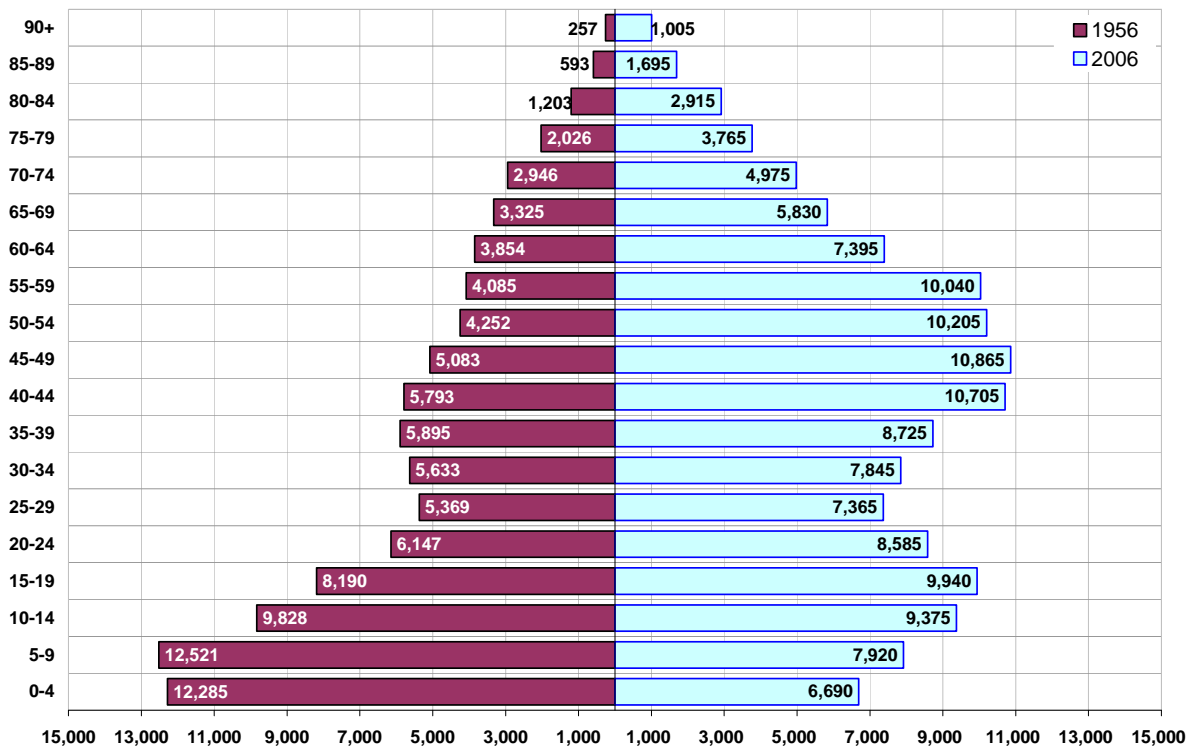
In 1956 there were 54,340 persons between the ages of 0 and 29 years living on Prince Edward Island, representing 54.7 per cent of the population. In 2006 this number was 49,875 or 36.7 per cent of the population, equivalent to 1941 when 53,560 persons were recorded in this age group.

These declines were offset by an increase of 107.7 percent in the number of persons aged 40 years and older during the period 1956-2006. In 1956 this group totaled 33,417 reaching 69,395 in 2006. Its share of the population increased from 33.7 per cent to 51.1 per cent.

There was a dramatic increase in the age group 65 years and over in 1956-2006, when their numbers increased by 95.0 percent: from 10,350 in 1956 to 20,185 in 2006. While in 1956 1 out of 10 persons was 65 years or older, in 2006 1 out of 7 persons belonged to this age group. The growth in the 80 years and older age group stands out in particular. In 1956 there were 2,053 persons in this age group. Fifty years later this number had increased to 5,615, a rise of 173.5 per cent. In 1956 females made up 54.7 per cent of this age group and by 2006 this proportion had increased to 66.4 per cent.

Diagram 11

P.E.I. POPULATION DISTRIBUTION, 1956 AND 2006 CENSUS



Source: Statistics Canada; data compiled by P.E.I. Provincial Treasury.

SUMMARY

The 'greying' of the population is largely attributable to two factors. First, the life expectancy of Canadians increased appreciably during the 20th century. As a result of that increase, an increasing number of Canadians are reaching the age of 65, and once this age is attained, they also live longer. Second, the fertility rate is below the replacement level.

All provinces, with the exception of Alberta, experienced a decline in the number of 0-4 year olds between 2001 and 2006, while the number of 5-14 year old children fell in all provinces. Proportionally, in 2001 19.1 per cent of the Canadian population was less than 15 years old falling to 17.6 per cent in 2006. The 15-64 year age group represented 68.0 per cent of the population in 2001 rising to 68.6 per cent in 2006. Seniors made up 13.0 per cent of the 2001 population and 13.7 per cent of the 2006 population.

On Prince Edward Island the population share of children less than 15 years fell from 19.7 per cent in 2001 to 17.6 per cent in 2006. The share of the 15-64 year age group rose from 66.6 to 67.5 per cent and the proportion of seniors increased from 13.7 per cent to 14.9 per cent.

During the last fifty years the Island population grew by 36.8 per cent as compared to 96.6 per cent population growth nationally. The most striking aspect of this comparison is the shift from a very young population in 1956 to a much more mature population today.

The number of Island children under 5 years of age was 45.5 per cent lower in 2006 than in 1956, while the number of young people between the ages of 5 and 14 years dropped by 22.6 per cent. In 2006 there were 68.8 per cent more persons between the age of 15 and 64 years than in 1956, while the number of Island seniors rose by 95.0 per cent.

On a more recent note, in 2006 there were 11.4 per cent fewer children below the age of 5 years on Prince Edward Island than there were in 2001. The number of 5-14 year olds declined by 9.4 per cent that year. During the same period there were 1.8 per cent more Islanders between the age of 15 and 64 years, while the number of seniors increased by 8.7 per cent. The share of the 15-64 year age group rose from 66.6 to 67.5 per cent, the largest increase in Atlantic Canada. The Island population share of seniors increased from 13.7 per cent in 2001 to 14.9 per cent in 2006.

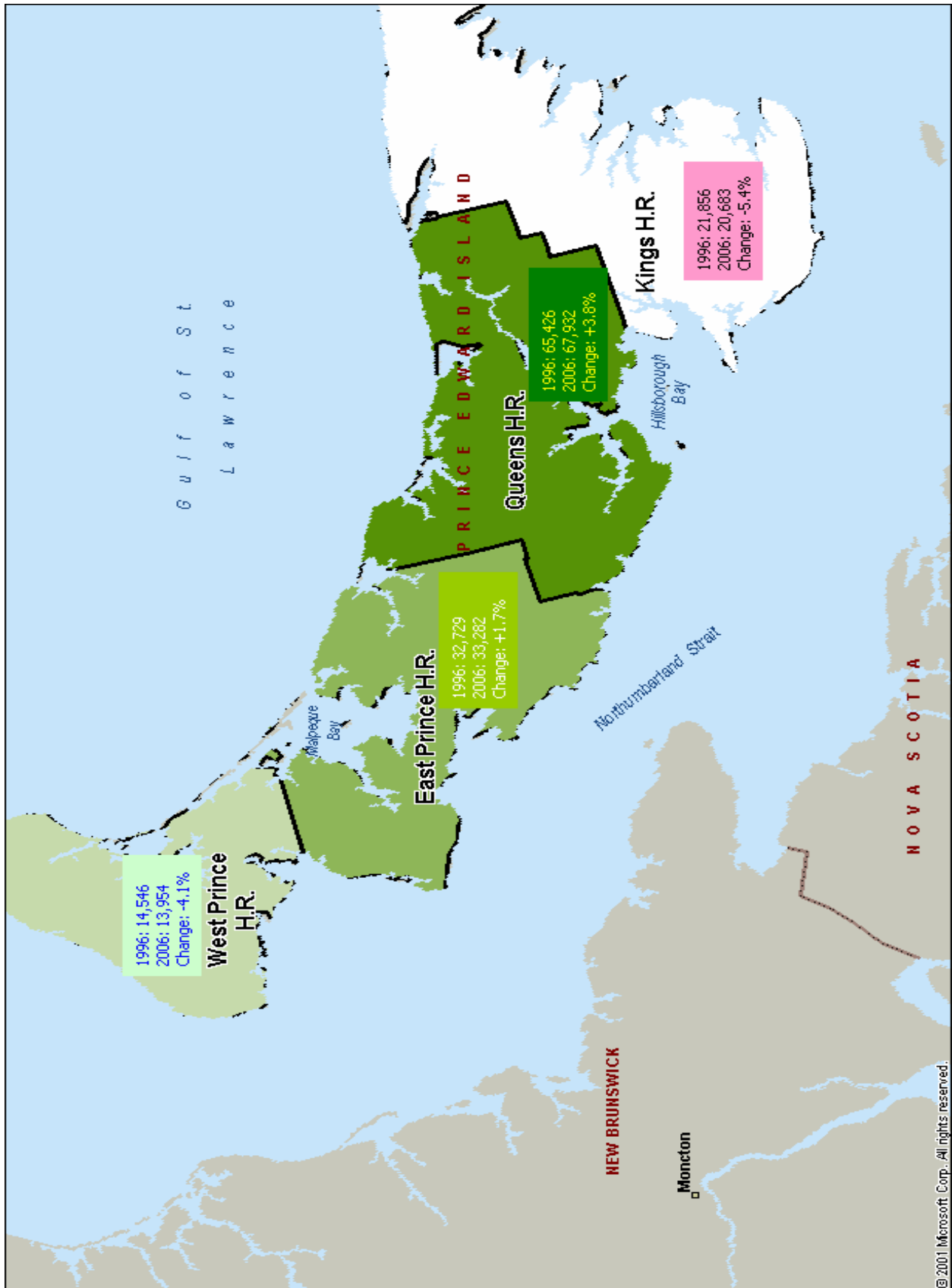
For more information visit Statistic Canada's 2006 Census of Population website by clicking <http://www12.statcan.ca/english/census/index.cfm> or contact:

The Staff of
Economics, Statistics and Federal Fiscal Relations Section
Program Evaluation & Fiscal Relations
P.E.I. Provincial Treasury

Tel. (902) 368-4035
Fax (902) 368-4034

APPENDIX: Map 1

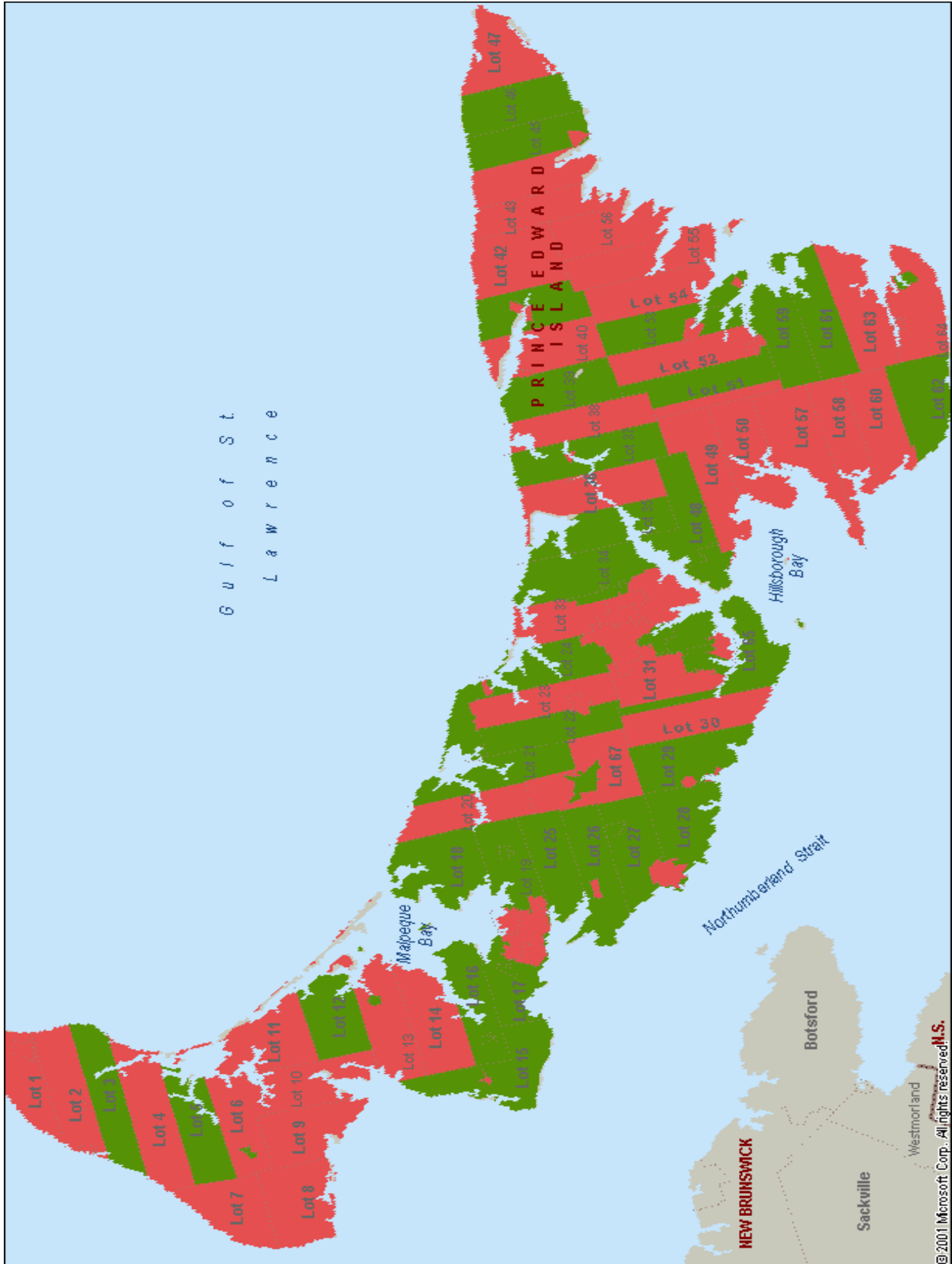
CENSUS POPULATION GROWTH BY HEALTH REGION, 1996-2006



© 2001 Microsoft Corp. All rights reserved.

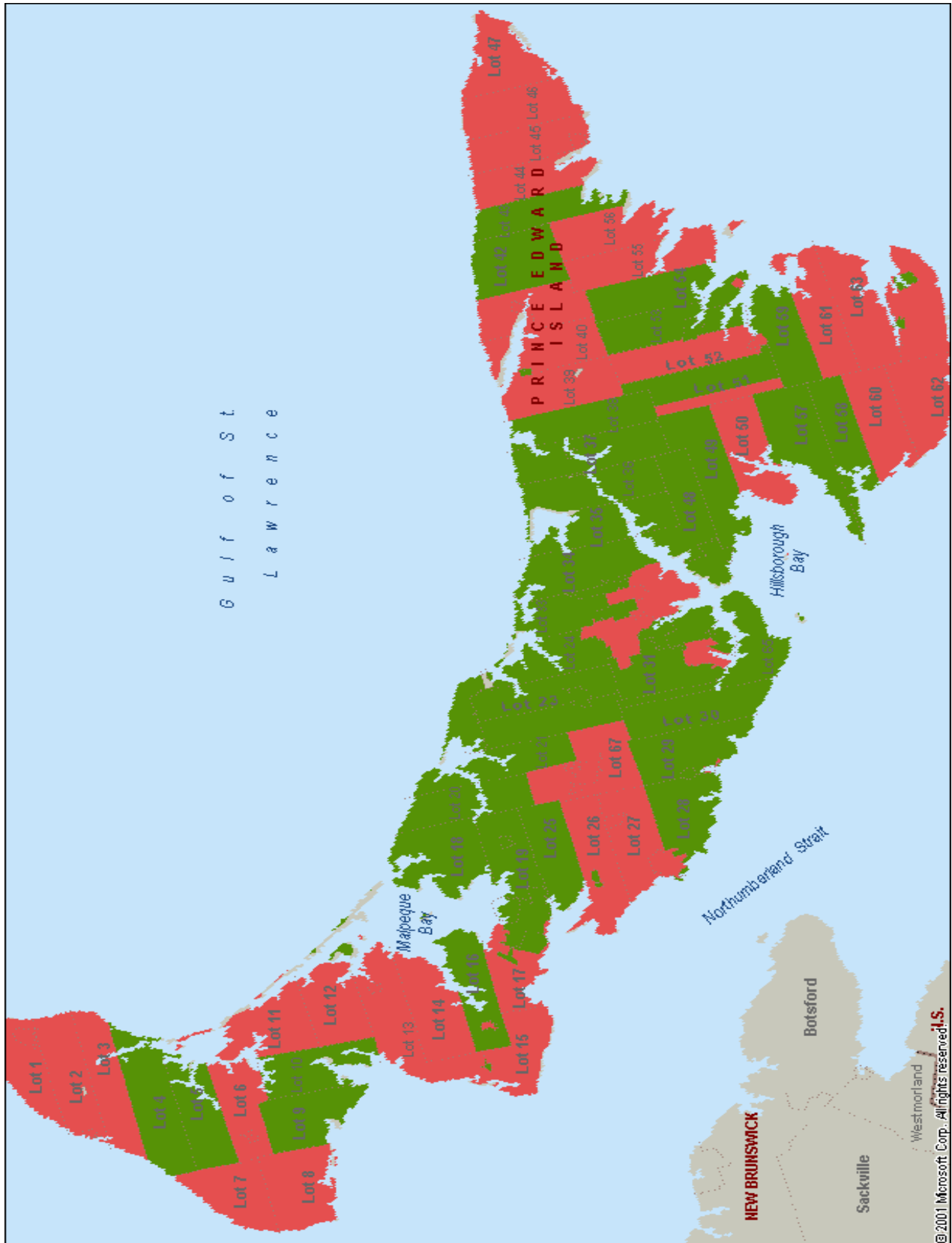
APPENDIX: Map 2

**2006 CENSUS POPULATION GROWTH OR DECLINE
BY CENSUS SUBDIVISION**



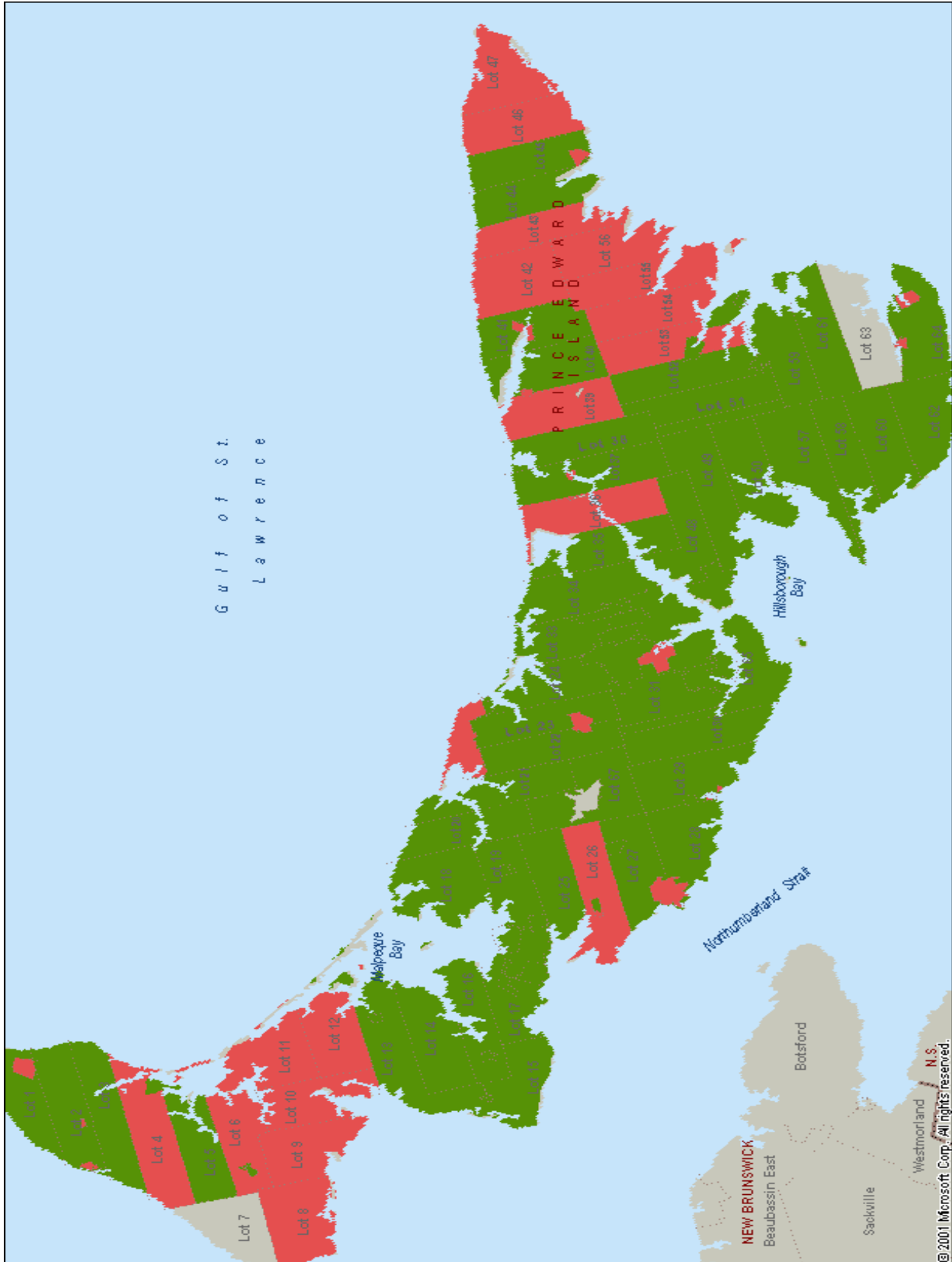
APPENDIX: Map 3

**2001 CENSUS POPULATION GROWTH OR DECLINE
BY CENSUS SUBDIVISIONS**



APPENDIX: Map 4

**1996 CENSUS POPULATION GROWTH OR DECLINE
BY CENSUS SUBDIVISIONS**



**CENSUS POPULATION OF CITIES, TOWNS, VILLAGES AND
NATIVE RESERVES ON PRINCE EDWARD ISLAND, 1991-2006**

	1991	1996	2001	2006		1991	1996	2001	2006
Abrams Village	311	328	342	266	Morell	349	336	332	306
Alberton	1,069	1,084	1,115	1,081	Morell ⁽¹⁾	18	n.a.	10	15
Bedeque	151	148	154	139	Mount Stewart	315	310	312	261
Borden-Carleton	1,056	829	798	786	Murray Harbour	390	356	357	358
Brackley	327	367	358	336	Murray River	485	420	435	430
Breadalbane	171	171	170	172	North Rustico	614	650	637	599
Cardigan	359	371	382	374	O'Leary	834	880	860	861
Central Bedeque	181	182	186	149	Resort Municipality ⁽²⁾	256	255	267	272
Charlottetown	31,541	32,531	32,245	32,174	Rocky Point ⁽¹⁾	32	n.a.	42	41
Clyde River	554	601	581	618	Scotchfort ⁽¹⁾	96	n.a.	105	137
Cornwall	4,053	4,291	4,412	4,677	Sherbrooke	150	160	178	168
Crapaud	323	378	382	353	Souris	1,333	1,293	1,248	1232
Georgetown	716	732	721	634	Stratford	5,427	5,869	6,314	7083
Hunter River	356	354	354	319	St. Louis	124	100	98	80
Kensington	1,332	1,383	1,385	1,485	St. Peter's Bay	284	283	267	248
Kings Royalty	224	246	257	292	Summerside	13,636	14,525	14,654	14500
Kinkora	253	321	315	326	Tignish	893	839	831	758
Lennox Island ⁽¹⁾	210	222	261	252	Tyne Valley	215	231	223	226
Linkletter	289	304	332	321	Union Road	197	218	225	245
Meadowbank	306	354	367	364	Victoria	172	158	119	77
Miltonvale Park	1,106	1,242	1,185	1,163	Warren Grove	297	295	332	341
Miminegash	249	210	188	176	Wellington	408	427	382	401
Miscouche	672	679	766	769	Winsloe South	197	207	240	198
Montague	1,901	1,995	1,945	1,802					

**CENSUS POPULATION OF TOWNSHIPS (LOTS)
ON PRINCE EDWARD ISLAND, 1991-2006**

Jurisdiction:	1991	1996	2001	2006	Jurisdiction:	1991	1996	2001	2006
Prince Edward I.	129,765	134,557	135,294	135,851	Lot 67	984	885	880	847
Kings County	19,330	19,565	19,180	18,608	Lot 20	754	785	805	798
Lot 64	981	1,010	971	931	Lot 21	849	865	905	920
Lot 63	1,016	1,015	991	901	Lot 22	464	505	575	579
Lot 61	841	885	816	832	Lot 23	804	860	880	837
Lot 59	1,221	1,270	1,276	1,285	Lot 24	1,374	1,415	1,515	1,572
Lot 66	176	205	176	172	Lot 33	934	1,015	1,095	1,067
Lot 51	701	745	781	792	Lot 34	1,949	2,180	2,345	2,355
Lot 52	846	945	891	823	Lot 35	1,374	1,455	1,535	1,607
Lot 53	371	355	406	439	Lot 36	779	740	780	761
Lot 54	436	425	441	435	Lot 37	534	540	505	544
Lot 55	506	490	446	397	Prince County	43,240	44,565	44,495	44,499
Lot 56	511	510	471	447	Lot 28	1,213	800	810	880
Lot 43	831	795	821	777	Lot 27	923	825	780	822
Lot 44	916	935	886	868	Lot 26	1,018	955	945	999
Lot 45	501	515	491	498	Lot 25	1,048	1,065	1,120	1,156
Lot 46	421	420	391	400	Lot 19	1,693	1,760	1,775	1,888
Lot 47	686	635	586	519	Lot 18	1,048	1,015	1,020	1,055
Lot 42	306	300	311	299	Lot 17	553	490	450	563
Lot 41	441	455	431	468	Lot 15	1,208	1,180	1,160	1,211
Lot 40	486	520	501	477	Lot 16	678	645	685	702
Lot 39	621	625	621	657	Lot 14	823	790	780	760
Lot 38	461	500	526	500	Lot 13	798	760	735	721
Queens County	67,195	70,430	71,620	72,744	Lot 12	973	900	825	873
Lot 62	549	555	485	540	Lot 11	668	590	540	523
Lot 60	299	335	320	319	Lot 10	368	305	330	304
Lot 58	499	540	545	521	Lot 6	993	960	890	843
Lot 57	954	1,050	1,085	999	Lot 9	468	395	410	362
Lot 50	894	945	880	853	Lot 8	758	670	675	688
Lot 49	1,039	1,070	1,120	1,043	Lot 7	683	630	585	562
Lot 48	1,639	1,570	1,605	1,791	Lot 5	1,183	1,160	1,190	1,253
Lot 31	1,494	1,615	1,635	1,616	Lot 4	1,323	1,235	1,240	1,175
Lot 65	1,574	1,595	1,830	2,051	Lot 3	878	895	865	899
Lot 30	694	755	770	759	Lot 2	1,768	1,765	1,720	1,655
Lot 29	774	900	860	935	Lot 1	1,978	1,935	1,900	1,881

Data presented in this table are *Census counts* and NOT population estimates.
Source: Statistics Canada, Census of Population, 1991, 1996, 2001 and 2006.

Dissemination calendar - Census 2006	
Calendrier de diffusion - Recensement 2006	
PRODUCTS - PRODUITS	Release date in the Daily Date de diffusion dans le Quotidien
Population and dwelling counts Chiffres de population et des logements	3/13/2007
Age and sex Âge et sexe	7/17/2007
Marital status (including common-law status) Families and households Housing and shelter cost (Including dwelling characteristics) État matrimonial (y compris union libre) Familles et ménages Logement et coûts d'habitation (y compris caractéristiques du logement)	9/12/2007
Language Mobility and migration immigration and citizenship Langue Mobilité et migration Immigration et citoyenneté	12/4/2007
Aboriginal people Peuple autochtones	1/15/2008
Labour (including labour market activity, industry and occupation) Place of work and commuting to work (including mode of transportation) Education Language (including language of work) Travail (y compris activité sur le marché du travail, industrie et profession) Lieu de travail et déplacements entre le domicile et le travail (y compris mode de transport) Scolarité Langue (y compris langue de travail)	3/4/2008
Ethnic origin and visible minorities Origine ethnique et minorités visibles	4/2/2008
Income and earnings Housing and shelter costs Revenu et gains Coûts d'habitation	5/1/2008