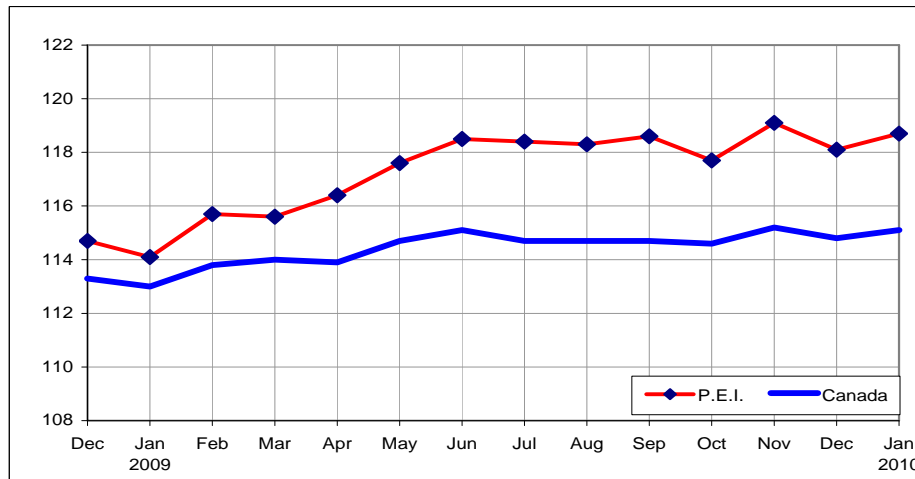


February 18, 2010

PEI / CANADA CONSUMER PRICE INDEX, JANUARY 2010



JANUARY 2010 ALL-ITEMS CONSUMER PRICE INDEX (2002=100)

	CAN	NF	PE	NS	NB	QC	ON	MB	SK	AB	BC
Jan-10	115.1	116.5	118.7	116.9	115.4	114.0	114.5	114.3	117.5	122.3	112.2
Dec-09	114.8	115.2	118.1	116.3	114.5	114.0	114.1	114.2	117.1	121.9	111.9
Jan-09	113.0	112.9	114.1	113.4	111.1	111.5	112.4	112.4	115.7	120.2	111.4
Year Over year Change (%)	1.9%	3.2%	4.0%	3.1%	3.9%	2.2%	1.9%	1.7%	1.6%	1.7%	0.7%
Monthly Change (%)	0.3%	1.1%	0.5%	0.5%	0.8%	0.0%	0.4%	0.1%	0.3%	0.3%	0.3%

SUMMARY

Statistics Canada reported that the year-over-year change in the *All-Items Consumer Price Index* for P.E.I. was 4.0 per cent in January 2010. This compares to a rise of 1.9 per cent for Canada. Year-over-year price increases for P.E.I. were led by *gasoline (34.6%)*, followed by *fuel oil and other fuels (14.2%)*, *passenger vehicle insurance premiums (7.3%)*, *cigarettes (7.1%)*, *telephone services (7.0%)*, *food purchased from restaurants (4.3%)* and *purchase and leasing of passenger vehicles (4.2%)*. Year-over-year declines included *fresh vegetables (-11.3%)*, *sugar and confectionery (-10.6%)*, *electricity (-8.0%)*, *home entertainment equipment parts and service (-6.7%)*, *recreational equipment and services excluding recreational vehicles (-3.6%)*, and *passenger vehicle parts maintenance and repairs (-3.3%)*.

The monthly change for P.E.I. in January 2010 was 0.5 per cent. Higher prices for *processed meat (6.3%)*, *men's clothing (5.1%)*, *telephone services (4.1%)*, *gasoline (3.4%)*, *fuel oil and other fuels (2.6%)*, and *food purchased from restaurants (1.1%)* were mostly offset by lower prices for *women's clothing (-9.2%)*, *fresh fruit (-4.2%)*, *fresh or frozen beef (-4.0%)*, *recreational equipment and services excluding recreational vehicles (-2.6%)*, and *electricity (-1.0%)*.