

May 16, 2016

Prince Edward Island Population Projections 2016 – 2055

Population projections are a fundamental tool to understand the trends in the overall size and composition of a population. Projections are prepared annually by the PEI Statistics Bureau to provide organizations with a basis on which to analyze and make planning decisions on issues that are population dependant, such as estimating the future demand for schools, hospitals, long-term care, and the size of the labour force.

Population Projection Highlights

Under the scenario considered:

- PEI’s population is projected to increase to 161,792 by 2055 (see Diagram 1).
- The total working age population of persons aged 15 to 64 peaked in 2012 at 98,182. In 2015 this age group had declined to 96,015. The working age population is projected to continue to decline in 2016 and beyond, dropping to 92,685 by 2048 before beginning to increase once again (see Diagram 8).
- Natural Increase (Births minus Deaths) is projected to become negative by 2018 (see Diagram 2).
- The fertility rate is assumed to remain relatively steady at 1.66 from 2016 to 2055 (See Diagram 3).
- The female population will continue to outnumber the males, reaching a maximum difference of 7,466 more females than males by 2055 (see Diagram 4).
- With natural increase projected to turn negative in 2018, international and inter-provincial migration will have a large impact on population growth or decline. Diagram 5 shows the trend in past and projected levels of international migration while interprovincial migration trends are shown in Diagram 6.

Diagram 1

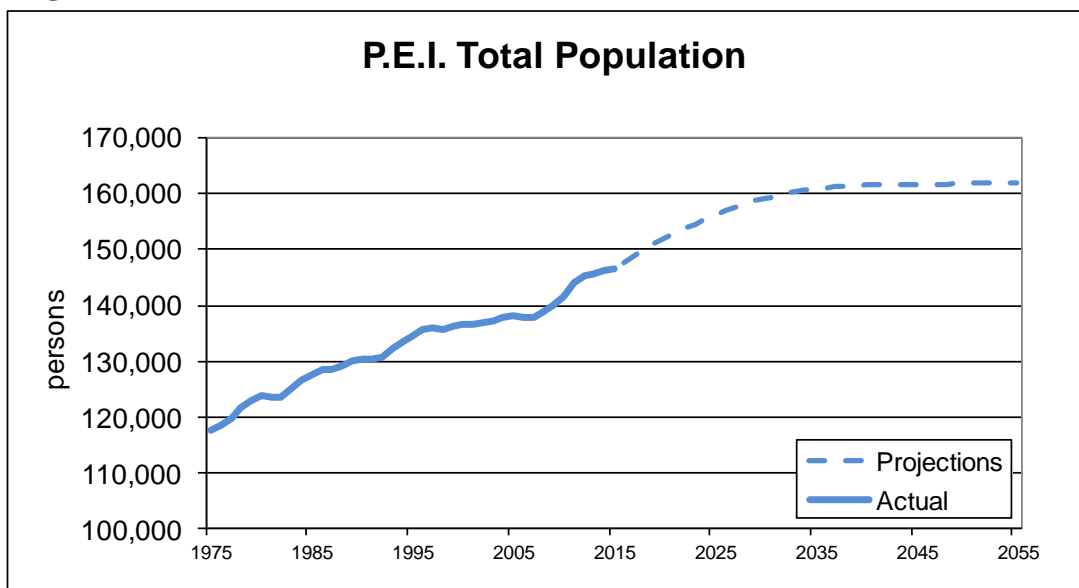


Diagram 2

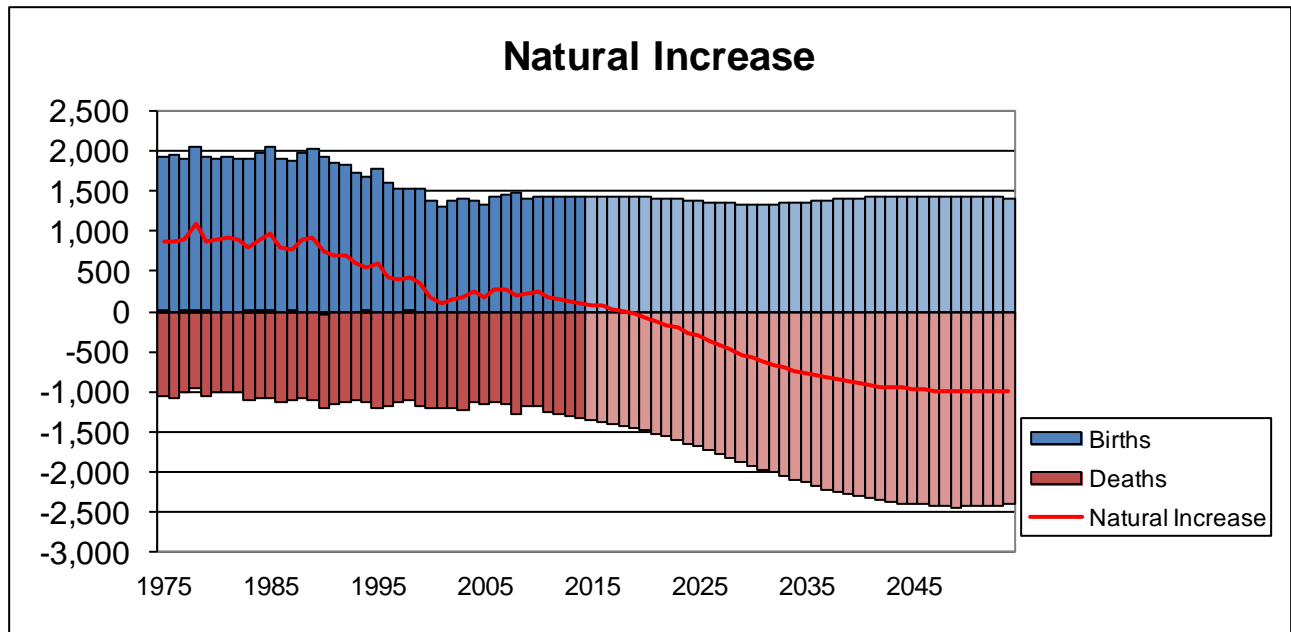


Diagram 3

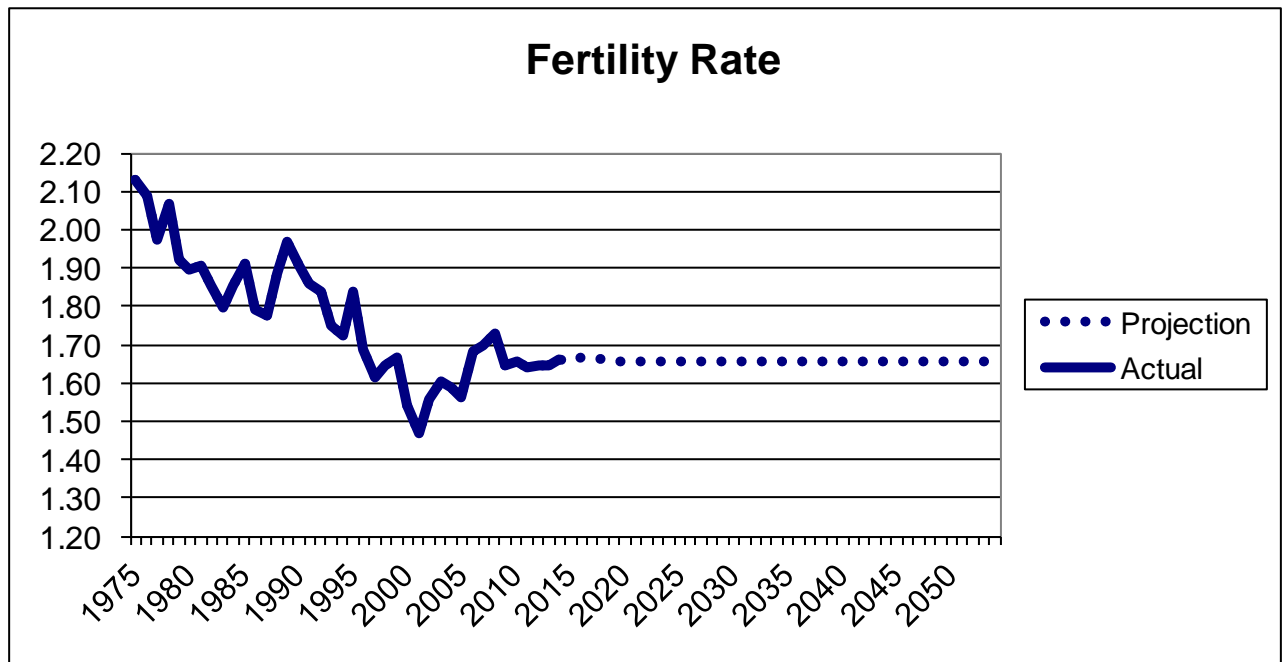


Diagram 4

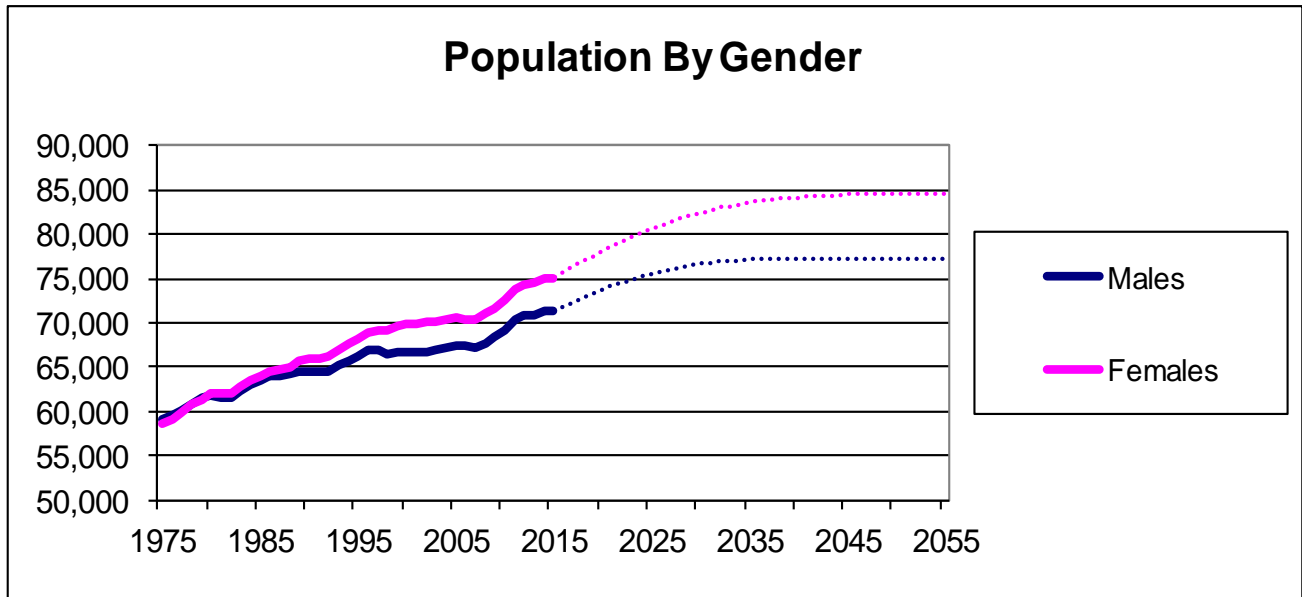


Diagram 5

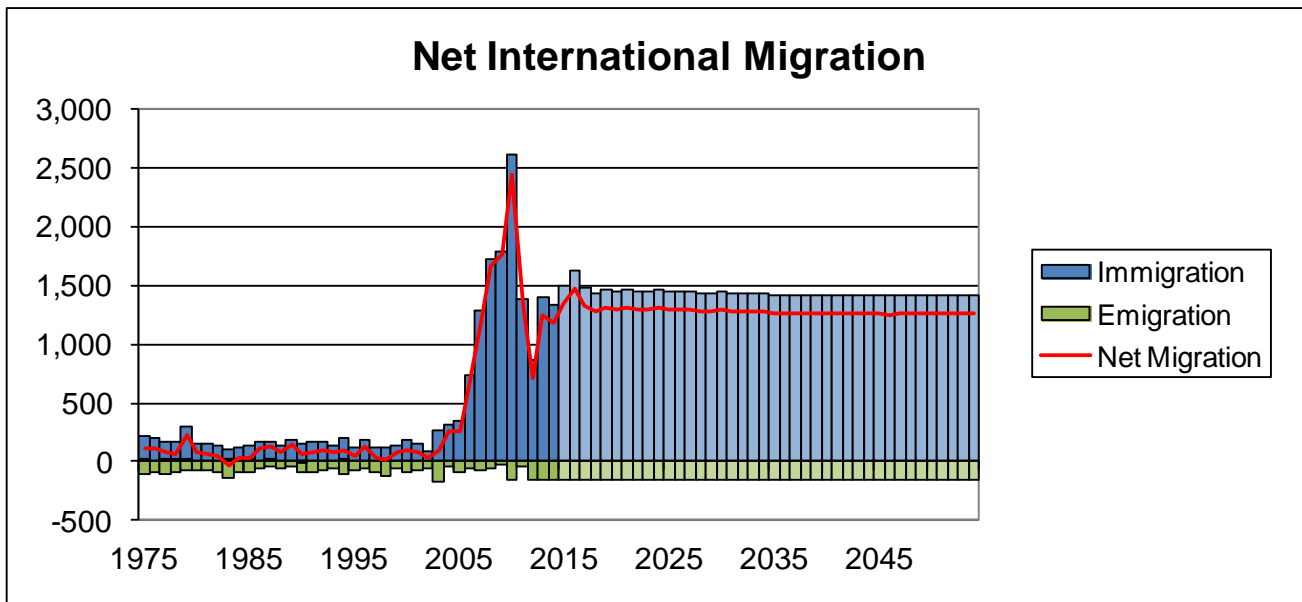
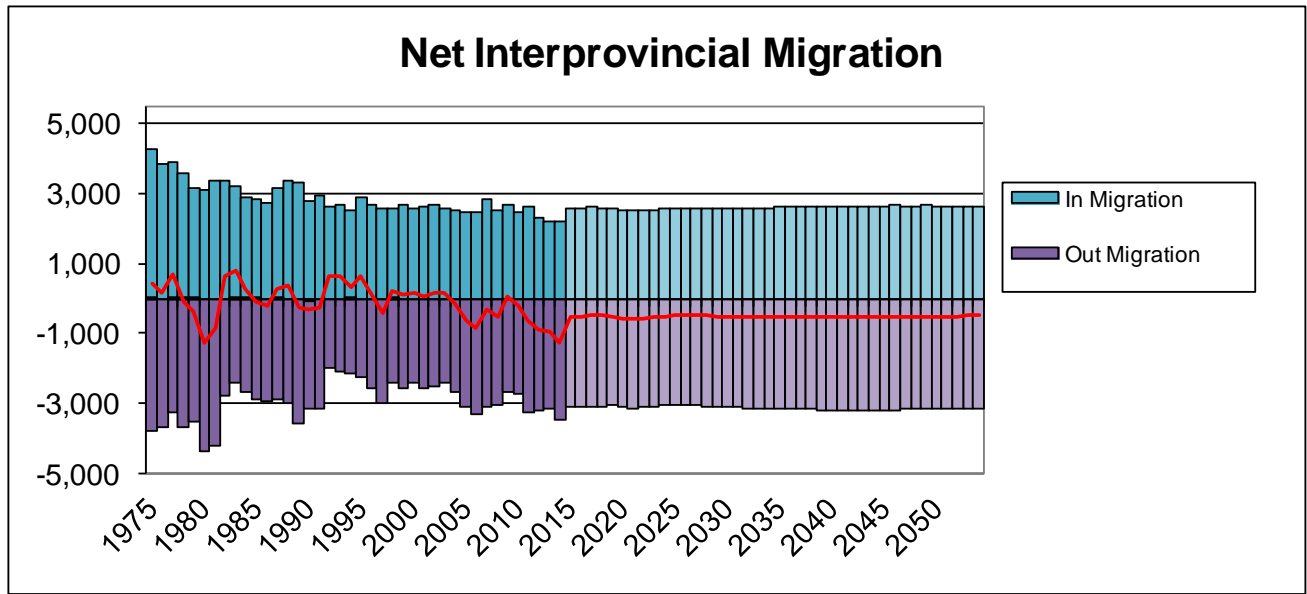


Diagram 6



Components of Population Growth, 1975-2015

In order to formulate population projections, we must first look at trends of the past. Annual population growth on PEI has averaged 0.5 per cent from 1975 to 2015. From 1975 to 1994, the growth rate averaged 0.7 per cent. From 1995 to 2004, the rate of population growth slowed, to an average of just 0.3 per cent annually. In more recent years, from 2005 to 2015, this rate of growth began to increase to reach an average of 0.6 per cent once again. Strong international immigration numbers pushed overall growth to an average rate of 1.1 per cent from 2008 to 2011. A rapid decline in the number of international immigrants in 2012 reduced the annual growth rate to average 0.4 per cent from 2012 to 2015.

Natural increase (births minus deaths) has been steadily declining. An aging population and declining birth rates have resulted in an increase in the number of deaths and a lower number of annual births. Over the period 1975 to 2015, natural increase was at its highest in 1978-79 at 1,087. Natural increase in 2014-15 was 90, the lowest on record. The fertility rate declined during the period of 1975 to 2001, from a peak of 2.13 in 1975 to a low of 1.47 in 2001. The years following 2001 showed a slight increase, climbing back to 1.73 by 2008 and averaging 1.64 from 2002 to 2015.

Inter-provincial migration has tended to go in cycles, with periods of net loss followed by periods of net gain. Despite these periods of net gains, on average over the period being examined (1975 to 2015), PEI has shown a net loss in inter-provincial migration. Over the past 10 years, PEI has had a net loss of 6,168 people due to inter-provincial migration.

Table 1 on the following page shows PEI's annual population estimates and components of growth from 1975 to 2015.

Population Projections 2016-2055

Population change is related to many socio-economic factors, many of which cannot be predicted with certainty. The following population projections were compiled assuming that historical trends for births, deaths, and interprovincial migration seen through the 1974 to 2015 period will continue. International migration forecasts are developed in consultation with relevant stakeholders as a most likely scenario based on maintaining current policies. It is assumed that international immigration will maintain levels seen in recent years, which are much higher than the immigration numbers seen prior to 2008, however lower than during the peak years of 2009 – 2011. It is also assumed that inter-provincial migration will continue with the recent 10 year trend of net loss.

As a result of the baby boom and the general decline in the fertility rate, the median age will continue to rise, the proportion of senior citizens will increase, births will continue to decline, and the number of deaths will increase. The projections are based on the fertility rate remaining at current levels. However, the projected fertility rate remains less than the replacement rate of 2.1 births per woman for a stable population.

Table 1 shows PEI's annual population estimates and components of growth from 1975 to 2015, as provided by Statistics Canada, while Table 2 shows PEI's annual population projections and components of growth from 2016 to 2055. Tables 3 and 4 show the annual population estimates and projections by age group.

Table 1 – Components of Growth, 1975 – 2015

Year	Population July 1	July 1 - June 30							
		Natural Increase			Immigrants	Net Emigrants*	Interprovincial		Residual
Births	Deaths	Net	In-Migrants	Out-Migrants					
1975	117,724	1,939	1,062	877	222	47	4,268	3,812	584
1976	118,648	1,958	1,077	881	200	38	3,837	3,683	-57
1977	119,902	1,915	1,019	896	174	46	3,933	3,233	-58
1978	121,684	2,053	966	1,087	168	37	3,584	3,658	-57
1979	122,885	1,935	1,065	870	300	20	3,185	3,543	-58
1980	123,735	1,903	1,002	901	146	23	3,116	4,367	-43
1981	123,551	1,924	1,007	917	148	35	3,375	4,231	137
1982	123,588	1,910	1,011	899	139	24	3,403	2,767	136
1983	125,102	1,895	1,106	789	103	92	3,219	2,422	136
1984	126,563	1,977	1,090	887	116	61	2,904	2,654	136
1985	127,619	2,055	1,091	964	129	30	2,830	2,906	170
1986	128,436	1,916	1,129	787	165	-25	2,720	2,925	567
1987	128,641	1,883	1,112	771	165	14	3,163	2,868	569
1988	129,289	1,984	1,085	899	139	-12	3,390	3,009	567
1989	130,153	2,028	1,103	925	181	34	3,322	3,575	568
1990	130,404	1,940	1,199	741	149	68	2,809	3,134	532
1991	130,369	1,866	1,167	699	165	73	2,937	3,174	96
1992	130,827	1,820	1,122	698	161	67	2,649	1,995	96
1993	132,177	1,725	1,120	605	139	10	2,688	2,066	96
1994	133,437	1,686	1,139	547	200	22	2,514	2,165	96
1995	134,415	1,788	1,198	590	127	-89	2,882	2,244	122
1996	135,737	1,616	1,192	424	185	91	2,694	2,558	296
1997	136,095	1,530	1,132	398	123	99	2,570	2,986	297
1998	135,804	1,539	1,108	431	125	-24	2,579	2,386	296
1999	136,281	1,529	1,182	347	142	107	2,662	2,558	297
2000	136,470	1,381	1,209	172	189	73	2,567	2,402	258
2001	136,665	1,313	1,205	108	145	105	2,639	2,577	-1
2002	136,876	1,374	1,217	157	89	68	2,686	2,521	-2
2003	137,221	1,403	1,225	178	268	131	2,570	2,426	-1
2004	137,681	1,371	1,126	245	312	36	2,537	2,676	-1
2005	138,064	1,329	1,165	164	352	23	2,460	3,099	53
2006	137,865	1,428	1,143	285	738	-115	2,485	3,334	433
2007	137,721	1,447	1,166	281	1,282	-204	2,821	3,112	433
2008	138,764	1,471	1,274	197	1,723	-193	2,522	3,058	432
2009	139,909	1,407	1,177	230	1,792	-119	2,709	2,649	432
2010	141,678	1,428	1,176	252	2,609	-80	2,494	2,704	371
2011	144,038	1,426	1,261	165	1,379	-295	2,620	3,238	0
2012	145,259	1,431	1,285	146	863	-74	2,294	3,195	0
2013	145,441	1,429	1,311	118	1,400	-144	2,198	3,139	0
2014	146,162	1,428	1,338	90	1,336	-102	2,202	3,445	0
2015	146,447								

* Net Emigrants includes International Emigrants, Canadians Temporarily Abroad, Returning Canadians, and Non-Permanent Residents

Table 2 – Projections, Total Population and Components of Growth 2016 – 2055

Year	Population July 1	July 1 - June 30							Residual
		Natural Increase			Immigrants	Net Emigrants*	Interprovincial		
		Births	Deaths	Net					In-Migrants
2015		1,428	1,349	79	1,504	-71	2,582	3,093	0
2016	147,590	1,444	1,373	71	1,620	-69	2,597	3,102	0
2017	148,845	1,443	1,411	32	1,474	-82	2,617	3,079	0
2018	149,971	1,439	1,443	-4	1,438	-58	2,585	3,074	0
2019	150,974	1,430	1,459	-29	1,465	-65	2,562	3,067	0
2020	151,970	1,426	1,491	-65	1,455	-79	2,535	3,091	0
2021	152,883	1,419	1,543	-124	1,458	-79	2,533	3,127	0
2022	153,702	1,404	1,569	-165	1,448	-78	2,525	3,095	0
2023	154,493	1,396	1,607	-211	1,451	-81	2,541	3,076	0
2024	155,279	1,386	1,650	-264	1,461	-71	2,566	3,071	0
2025	156,042	1,378	1,687	-309	1,440	-67	2,582	3,038	0
2026	156,784	1,365	1,732	-367	1,442	-88	2,581	3,039	0
2027	157,489	1,358	1,778	-420	1,443	-89	2,573	3,059	0
2028	158,115	1,348	1,822	-474	1,431	-90	2,578	3,073	0
2029	158,667	1,342	1,880	-538	1,426	-97	2,569	3,085	0
2030	159,136	1,338	1,923	-585	1,440	-97	2,570	3,105	0
2031	159,553	1,339	1,969	-630	1,438	-94	2,579	3,119	0
2032	159,915	1,343	2,016	-673	1,430	-91	2,587	3,126	0
2033	160,224	1,352	2,053	-701	1,433	-95	2,602	3,130	0
2034	160,523	1,358	2,095	-737	1,429	-94	2,608	3,154	0
2035	160,763	1,366	2,137	-771	1,407	-96	2,615	3,162	0
2036	160,948	1,378	2,175	-797	1,420	-94	2,625	3,162	0
2037	161,128	1,390	2,218	-828	1,418	-98	2,632	3,174	0
2038	161,274	1,396	2,253	-857	1,411	-99	2,636	3,175	0
2039	161,388	1,407	2,285	-878	1,418	-99	2,642	3,179	0
2040	161,490	1,415	2,315	-900	1,410	-98	2,637	3,184	0
2041	161,551	1,426	2,339	-913	1,418	-94	2,639	3,188	0
2042	161,601	1,431	2,366	-935	1,422	-93	2,648	3,186	0
2043	161,643	1,438	2,378	-940	1,412	-91	2,659	3,193	0
2044	161,672	1,440	2,397	-957	1,418	-91	2,656	3,193	0
2045	161,687	1,441	2,413	-972	1,418	-94	2,659	3,186	0
2046	161,700	1,442	2,414	-972	1,408	-97	2,663	3,184	0
2047	161,712	1,442	2,427	-985	1,420	-93	2,660	3,173	0
2048	161,727	1,441	2,433	-992	1,416	-95	2,660	3,166	0
2049	161,740	1,437	2,444	-1,007	1,420	-95	2,664	3,166	0
2050	161,746	1,434	2,441	-1,007	1,417	-96	2,658	3,163	0
2051	161,747	1,433	2,437	-1,004	1,416	-96	2,657	3,160	0
2052	161,752	1,424	2,430	-1,006	1,419	-96	2,652	3,161	0
2053	161,752	1,421	2,424	-1,003	1,416	-96	2,653	3,148	0
2054	161,766	1,415	2,413	-998	1,418	-99	2,658	3,151	0
2055	161,792								

* Net Emigrants includes International Emigrants, Canadians Temporarily Abroad, Returning Canadians, and Non-Permanent Residents

Age Structure

- In 1975 the median age¹ in PEI was 26.3. By 2015, this has risen to 43.7. The median age for the province is projected to rise to 46.0 by 2025, 47.2 by 2035, and to 47.7 by 2045, before beginning to decline to reach 46.6 by 2055.
- The number of people aged 65 and over in 2015 was 27,180. This is projected to rise to 37,105 by 2025, 43,934 by 2035, 44,727 by 2045, and fall to 44,229 by 2055.
- In 2015, the number of people 75 and over was 10,866. There were 8.8 people of working age per one person 75 and over. This age group is projected to double by 2034, reaching 21,972, and to continue to increase until 2047, reaching a peak of 25,109 before beginning to decline. By 2040, it is projected that there will only be 3.7 people of working age per one person 75 and over.
- In 2015, the working age population (between 15 and 64) was 96,015, down from a peak of 98,182 in 2012. This age group is projected to continue to decline to 94,408 by 2025, 93,136 by 2035, 93,021 by 2045 and to 92,753 by 2055. (see Diagram 8)
- The number of children under 15 years old has declined by approximately 10,000 from 1975 to 2015. In 2015, this age group totaled 23,252, up slightly from 23,156 in 2014. Over the period considered, this number is projected to remain relatively stable at approximately 24,000 (see Diagram 7).
- The total dependency ratio is the number of persons under age 15 and those aged 65 and older shown as a percentage of persons aged 15 to 64. It is the sum of the youth dependency ratio and the senior dependency ratio and represents the relative size of the population being supported by the working age population. In 1975, the total dependency ratio was 66.6 per cent. By 2007, this had reached an all time low of 46.7 per cent. In 2015 the total dependency ratio was 52.5 per cent. The ratio is projected to steadily increase, reaching a peak of 74.5 per cent by 2047. Diagram 9 shows the dependency ratio for PEI since 1975 and projections to 2055.
- Since 1975, the youth dependency ratio has fallen from 48.2 per cent to a low of 23.5 per cent in 2012. This ratio has risen to 24.2 per cent in 2015. This is projected to slowly rise for the next 40 years. Over the same time period, the senior dependency ratio has increased from 18.4 per cent to 28.3 per cent in 2015. This is projected to increase at a faster rate in the coming years and will account for almost all of the increase in the total dependency ratio, peaking at 48.4 per cent in 2047.
- In 2015, there were 1.9 people of working age per one person aged 0 – 14 or aged 65 and older. By 2046 this is projected to drop to 1.3 persons of working age.
- The aging of the population can be seen most evidently by looking at the age pyramid diagrams, which show the proportion of the population by gender and age groups. (Diagrams 9A –C)

¹ The median age is the age at which half the population is older and half the population is younger.

Diagram 7

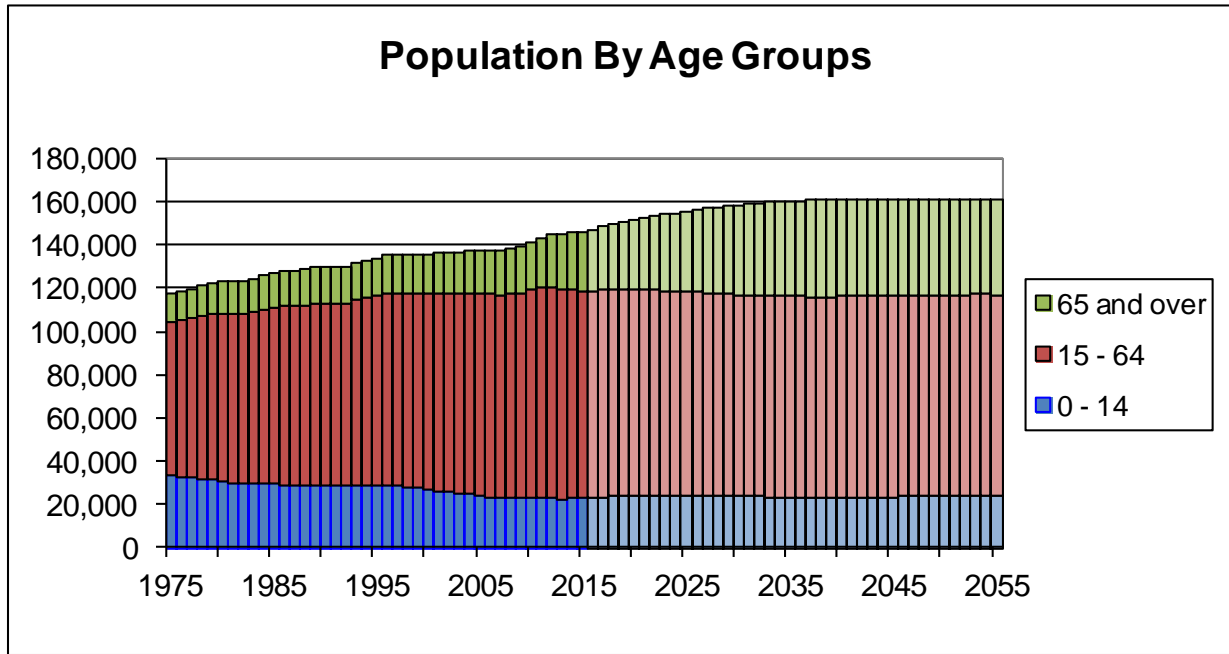


Diagram 8

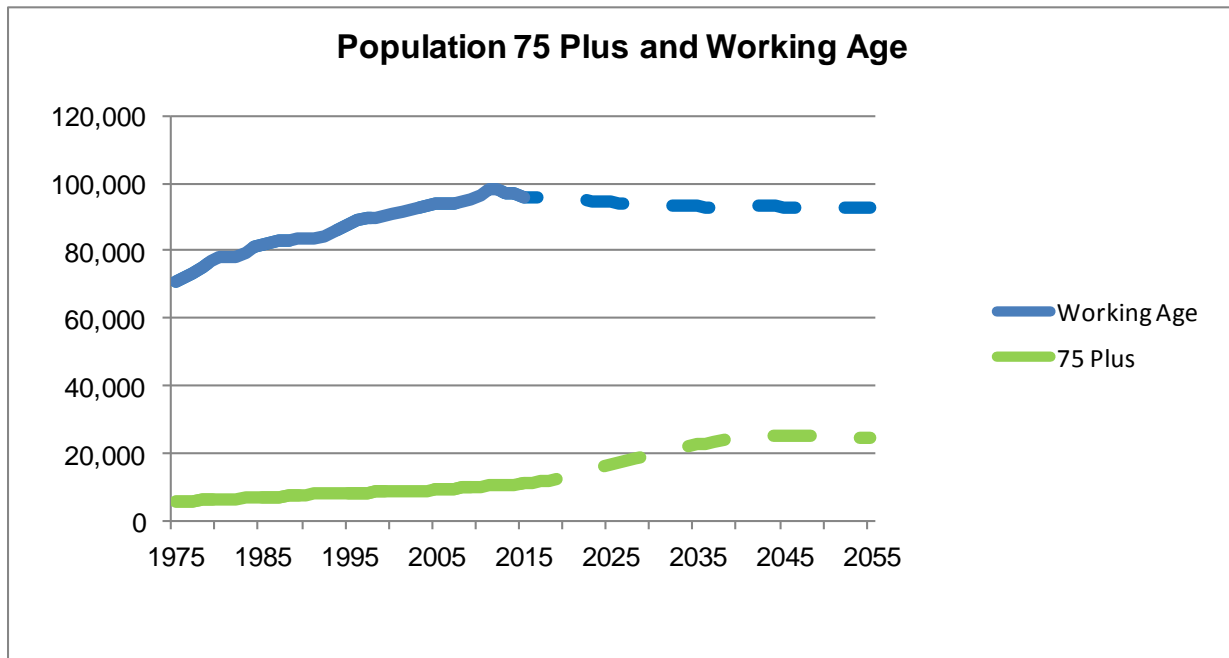
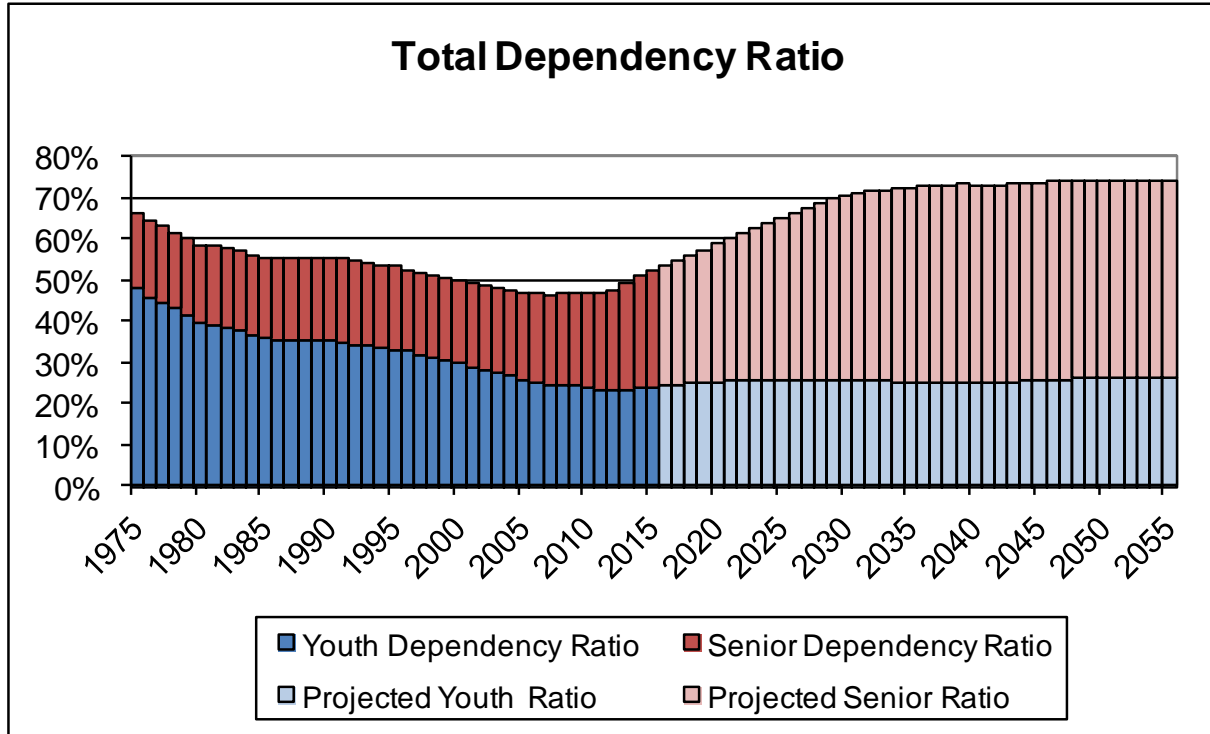


Diagram 9



Age Pyramids
Diagram 9a

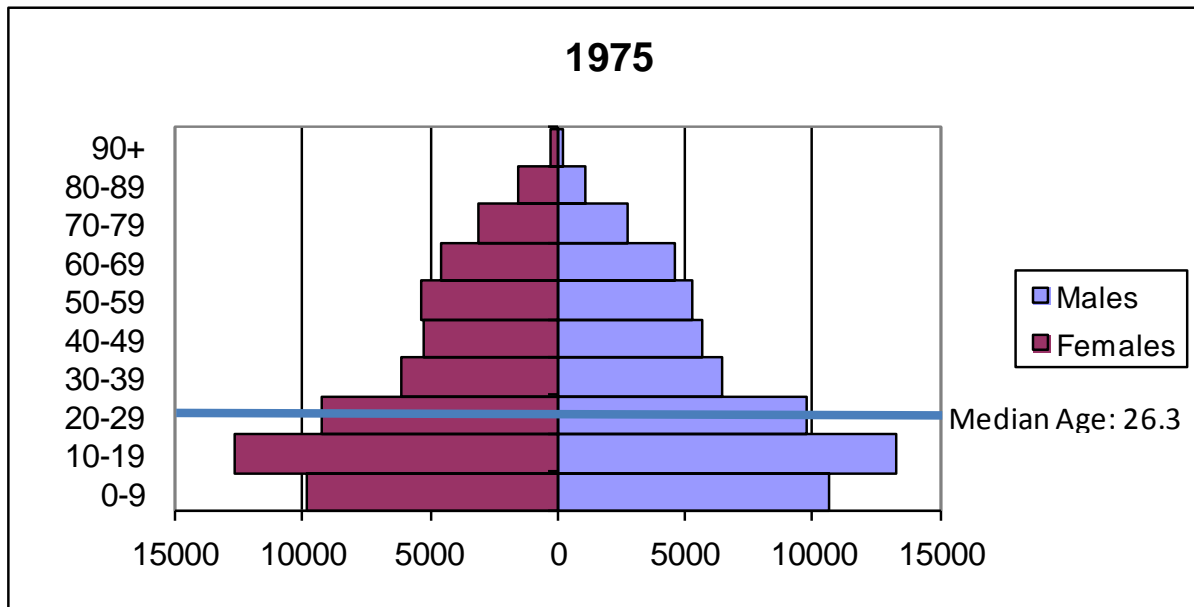


Diagram 9b – Current Year

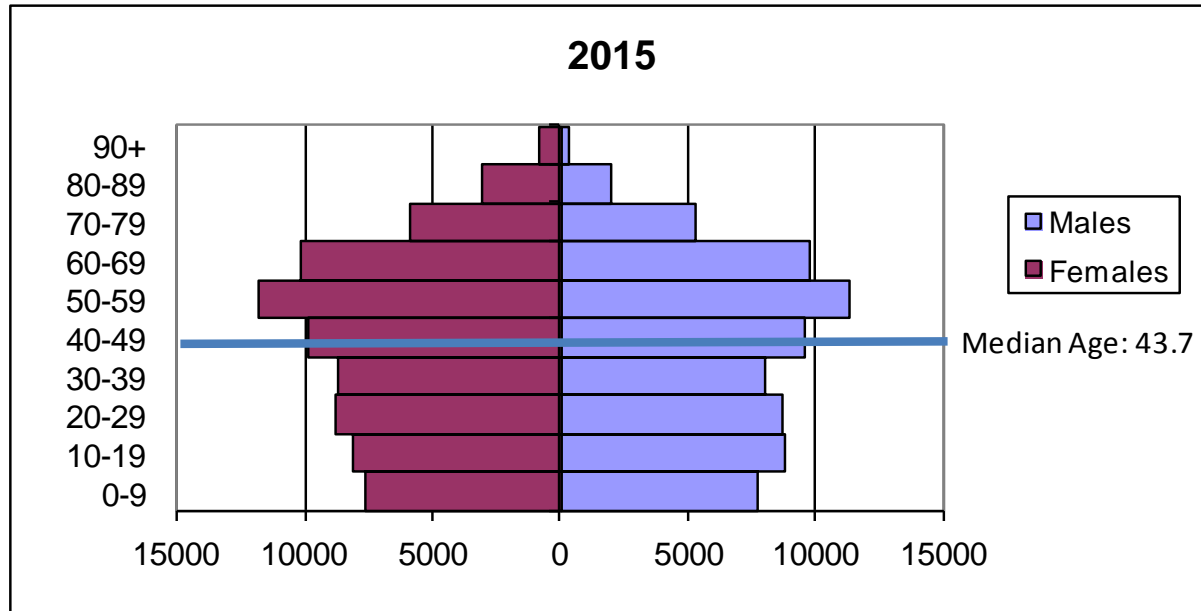


Diagram 9c

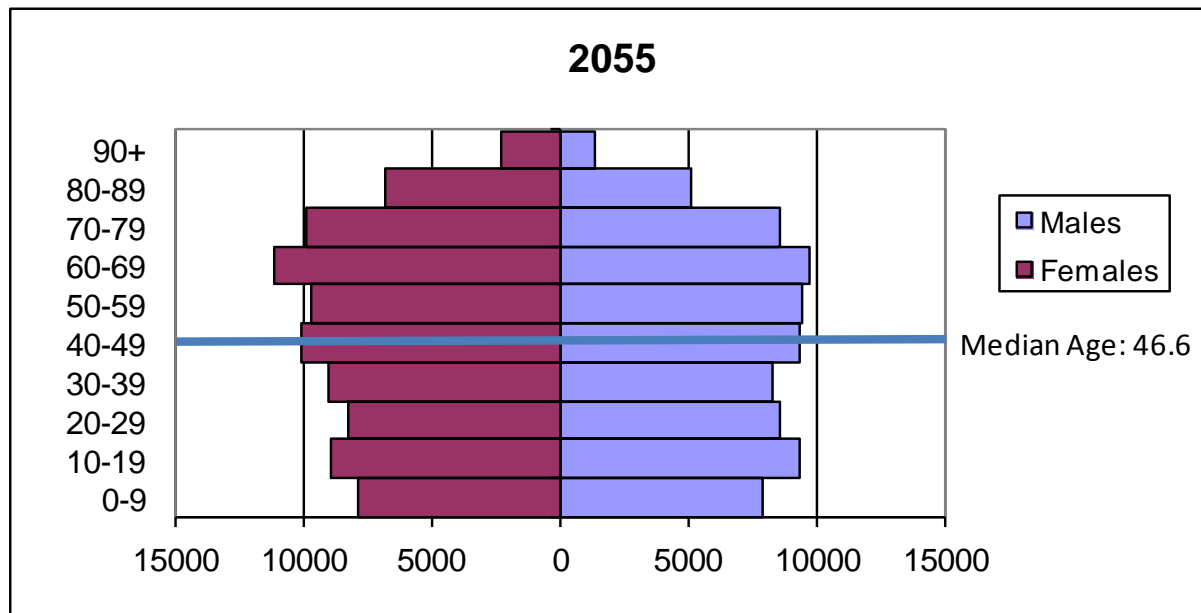


Table 3 – Population by Age Group, estimates 1975-2015

Year	0 - 4	5 - 14	15 - 24	25 - 34	35 - 44	45 - 54	55 - 64	65 - 74	75 - 84	85 plus
1975	9,812	24,223	22,367	15,769	11,572	10,637	10,320	7,243	4,362	1,419
1976	9,626	23,628	23,011	16,409	11,729	10,580	10,377	7,484	4,376	1,428
1977	9,583	23,342	23,176	17,120	11,972	10,637	10,436	7,697	4,487	1,452
1978	9,659	22,813	23,810	17,921	12,275	10,702	10,490	7,952	4,562	1,500
1979	9,773	22,010	24,327	18,495	12,669	10,811	10,429	8,217	4,571	1,583
1980	9,745	21,375	24,478	19,089	13,042	10,848	10,487	8,425	4,617	1,629
1981	9,623	20,917	23,821	19,312	13,409	10,974	10,547	8,663	4,561	1,724
1982	9,524	20,730	23,131	19,225	14,097	11,099	10,560	8,814	4,622	1,786
1983	9,522	20,510	23,327	19,534	14,952	11,178	10,593	8,898	4,753	1,835
1984	9,491	20,292	23,509	19,884	15,743	11,341	10,568	9,049	4,847	1,839
1985	9,569	20,111	23,272	20,221	16,404	11,532	10,503	9,213	4,918	1,876
1986	9,677	19,835	22,719	20,822	16,906	11,719	10,522	9,288	5,060	1,888
1987	9,643	19,710	22,065	20,962	17,461	11,864	10,516	9,334	5,206	1,880
1988	9,637	19,788	21,270	21,253	18,148	12,012	10,547	9,356	5,414	1,864
1989	9,779	19,867	20,510	21,462	18,769	12,355	10,623	9,272	5,633	1,883
1990	9,775	19,801	19,896	21,338	19,251	12,691	10,648	9,265	5,824	1,915
1991	9,520	19,860	19,584	20,788	19,629	13,157	10,722	9,289	5,939	1,881
1992	9,440	19,796	19,492	20,358	19,732	13,940	10,858	9,337	5,967	1,907
1993	9,508	19,861	19,506	20,243	20,022	14,767	10,964	9,331	5,991	1,984
1994	9,416	19,908	19,656	20,070	20,244	15,591	11,119	9,341	6,060	2,032
1995	9,145	20,130	19,554	19,817	20,512	16,376	11,363	9,249	6,155	2,114
1996	9,065	20,169	19,601	19,686	20,937	17,116	11,633	9,217	6,174	2,139
1997	8,710	20,127	19,385	19,342	21,258	17,817	11,780	9,294	6,228	2,154
1998	8,337	19,880	19,116	18,529	21,581	18,465	11,984	9,355	6,354	2,203
1999	8,139	19,724	18,965	18,055	21,779	19,050	12,452	9,489	6,339	2,289
2000	7,955	19,374	19,090	17,360	21,869	19,678	12,862	9,576	6,341	2,365
2001	7,571	19,096	19,305	16,930	21,589	20,237	13,354	9,753	6,424	2,406
2002	7,315	18,736	19,341	16,780	21,320	20,304	14,255	9,890	6,505	2,430
2003	7,218	18,361	19,313	16,718	21,019	20,369	15,168	10,095	6,490	2,470
2004	7,066	18,016	19,361	16,685	20,782	20,460	16,023	10,277	6,510	2,501
2005	6,890	17,638	19,380	16,550	20,446	20,699	16,806	10,477	6,572	2,606
2006	6,703	17,140	19,179	16,263	19,987	21,094	17,382	10,766	6,630	2,721
2007	6,777	16,549	19,038	15,943	19,333	21,477	18,070	11,037	6,696	2,801
2008	6,951	16,272	18,921	15,977	18,866	21,963	18,823	11,265	6,853	2,873
2009	7,088	16,162	18,858	15,916	18,617	22,346	19,475	11,632	6,961	2,854
2010	7,164	15,994	19,039	16,061	18,358	22,743	20,231	12,110	7,053	2,925
2011	7,341	15,833	19,293	16,280	18,644	22,823	20,915	12,674	7,227	3,008
2012	7,346	15,705	19,460	16,385	18,406	22,882	21,049	13,666	7,322	3,038
2013	7,351	15,677	19,208	16,226	18,132	22,556	21,172	14,627	7,436	3,056
2014	7,360	15,796	18,929	16,211	18,062	22,354	21,241	15,555	7,605	3,049
2015	7,356	15,896	18,515	16,158	17,840	22,041	21,461	16,314	7,819	3,047

Table 4 – Population by Age Group, projections 2016-2055

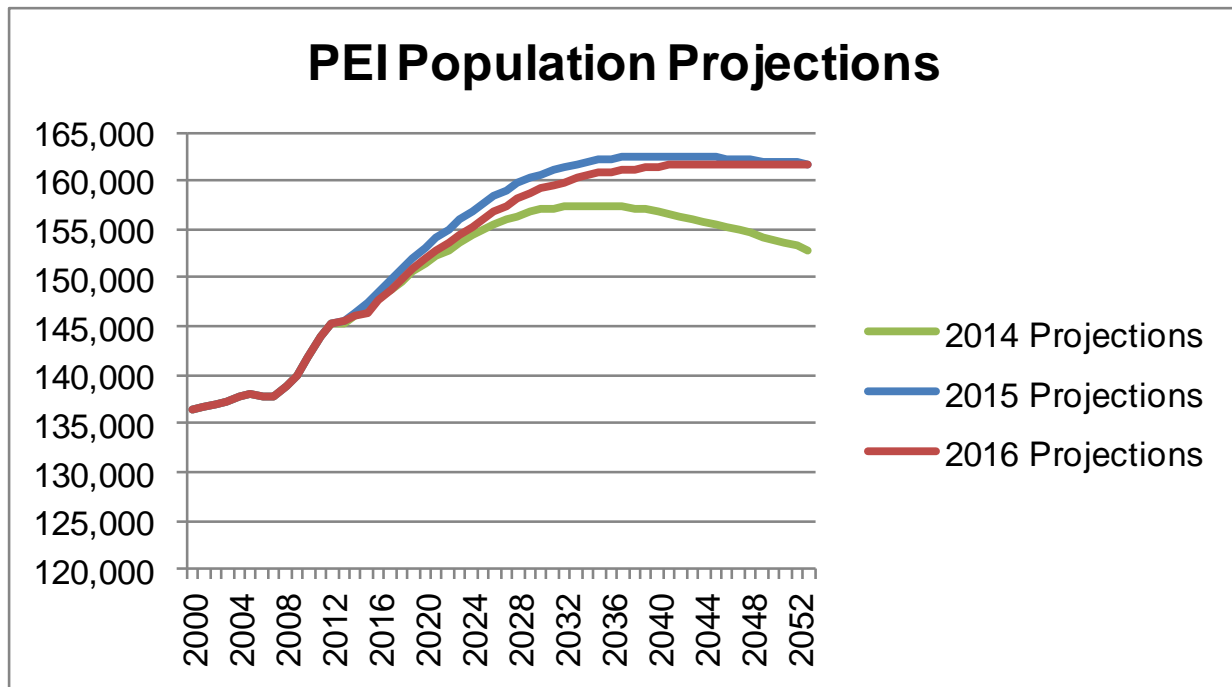
Year	0 - 4	5 - 14	15 - 24	25 - 34	35 - 44	45 - 54	55 - 64	65 - 74	75 - 84	85 plus
2016	7,352	16,121	18,135	16,268	17,834	21,946	21,814	16,963	8,091	3,066
2017	7,347	16,420	17,808	16,311	17,880	21,871	22,156	17,597	8,348	3,107
2018	7,360	16,648	17,613	16,362	17,912	21,445	22,648	18,174	8,644	3,165
2019	7,364	16,828	17,461	16,429	17,897	21,035	22,960	18,708	9,086	3,206
2020	7,382	16,969	17,310	16,551	17,928	20,601	23,181	19,292	9,511	3,245
2021	7,390	17,162	17,066	16,671	17,989	20,412	23,061	19,779	10,018	3,335
2022	7,375	17,205	17,048	16,657	18,039	20,331	22,928	19,891	10,833	3,395
2023	7,345	17,216	17,169	16,634	17,915	20,325	22,767	20,062	11,600	3,460
2024	7,303	17,250	17,308	16,489	17,849	20,333	22,669	20,202	12,338	3,538
2025	7,252	17,277	17,469	16,204	18,027	20,238	22,470	20,479	12,980	3,646
2026	7,200	17,299	17,717	15,815	18,163	20,212	22,301	20,813	13,492	3,772
2027	7,140	17,290	18,023	15,479	18,176	20,220	22,177	21,116	13,970	3,898
2028	7,094	17,272	18,273	15,312	18,210	20,214	21,726	21,567	14,395	4,052
2029	7,043	17,240	18,474	15,193	18,264	20,166	21,332	21,863	14,806	4,286
2030	6,999	17,214	18,625	15,056	18,385	20,178	20,886	22,072	15,236	4,485
2031	6,955	17,161	18,827	14,842	18,507	20,244	20,693	21,950	15,621	4,753
2032	6,926	17,074	18,881	14,842	18,499	20,307	20,624	21,832	15,747	5,183
2033	6,911	16,975	18,902	14,965	18,493	20,189	20,631	21,682	15,917	5,559
2034	6,915	16,873	18,936	15,093	18,348	20,137	20,661	21,588	16,060	5,912
2035	6,932	16,761	18,963	15,220	18,040	20,345	20,568	21,406	16,324	6,204
2036	6,961	16,642	18,994	15,431	17,599	20,498	20,552	21,255	16,607	6,409
2037	7,003	16,536	18,986	15,700	17,218	20,520	20,582	21,134	16,860	6,589
2038	7,052	16,462	18,964	15,923	17,024	20,556	20,576	20,715	17,240	6,762
2039	7,098	16,408	18,930	16,105	16,888	20,619	20,525	20,342	17,497	6,976
2040	7,151	16,381	18,895	16,257	16,723	20,760	20,533	19,936	17,676	7,178
2041	7,201	16,370	18,838	16,465	16,475	20,898	20,595	19,756	17,567	7,386
2042	7,252	16,384	18,745	16,527	16,464	20,881	20,670	19,695	17,437	7,546
2043	7,297	16,424	18,643	16,554	16,606	20,875	20,546	19,707	17,300	7,691
2044	7,342	16,481	18,534	16,582	16,757	20,702	20,506	19,744	17,215	7,809
2045	7,377	16,562	18,415	16,612	16,913	20,352	20,729	19,669	17,082	7,976
2046	7,406	16,660	18,297	16,657	17,156	19,862	20,912	19,671	16,972	8,107
2047	7,421	16,770	18,193	16,652	17,476	19,424	20,951	19,716	16,893	8,216
2048	7,432	16,886	18,121	16,632	17,744	19,204	20,984	19,716	16,595	8,413
2049	7,436	16,997	18,072	16,604	17,961	19,038	21,052	19,674	16,332	8,574
2050	7,434	17,106	18,047	16,579	18,142	18,841	21,194	19,683	16,052	8,668
2051	7,426	17,204	18,041	16,527	18,383	18,566	21,336	19,734	15,922	8,608
2052	7,416	17,289	18,056	16,444	18,456	18,554	21,316	19,815	15,882	8,524
2053	7,396	17,355	18,098	16,357	18,477	18,720	21,289	19,698	15,907	8,455
2054	7,376	17,414	18,159	16,260	18,508	18,898	21,101	19,668	15,969	8,413
2055	7,354	17,456	18,247	16,152	18,538	19,087	20,729	19,902	15,939	8,388

Comparison to Previous Population Projections

The 2014 population projections showed a peak of 157,450 in 2034 for PEI before beginning to decline to reach 152,936 in 2053. 2015 projections showed PEI hitting a peak of 162,554 in 2041 and then declining to 161,711 by 2054. Current 2016 projections show continued population growth to 2055, although very weak growth beyond 2035, reaching a peak of 161,792 in 2055.

Diagram 10 shows the 2014 and 2015 projections as compared to the 2016 projections.

Diagram 10



The main drivers of the difference in the three sets of projections is international and interprovincial migration. It is now believed that with the current policy and programs in place, PEI will attract and retain international immigrants at a higher rate than assumed for the 2014 projections. Advancing this increase annually to 2055 results in a higher peak in total population which will occur further into the future.

Although the exact retention rate of immigrants to PEI is currently unknown, it is widely believed that international immigrants to PEI have a higher propensity to move to other provinces than the general population. As a result, an increase over the 2015 projections in inter-provincial out migration is anticipated. PEI's net interprovincial migration is projected to be negative for the duration of the period considered. This negative impact results in slower population growth than in the 2015 population projections.

The number of births is also affected by the increase in the number of immigrants. With more women between the ages of 14 and 49 projected, the number of births has also increased compared to the 2014 projections.

Limitations of Population Projections

In general, all assumptions relating to the components of population change (i.e., migration, births and deaths) are based on past conditions, modified wherever possible to take into consideration possible future changes. Consequently, the resulting population projections are not necessarily what will be, but rather what could be given the realization of these conditions. It is certainly possible that unforeseen changes in factors such as government policy, economic development, land use and zoning will affect future populations. As a result, the projections should be regarded as only one possible scenario of the future size and age-gender structure of the population.

The Component/Cohort-Survival Method

Prince Edward Island population projections result from the application of a 'component/cohort-survival' population model to assumptions dealing with fertility, mortality and migration. The component/cohort-survival method requires separate projections of each of the components of population change, namely fertility, mortality and net migration. With this information, and with a base year age-specific estimate of population, a projection for any subsequent year is made by promoting each age group in the preceding year to next highest age group, while at the same time taking into account the effects of net migration, deaths and births.

Specifically, beginning from a base year estimate of population by single year of age and sex, each age group i in the base year t is promoted to the next higher age group $i+1$ in time $t+1$, while at the same time taking into account the effects of net migration, births and/or deaths in that age cohort. This process is then repeated for the number of years required.

Data tables can be downloaded at http://www.gov.pe.ca/photos/original/pt_popproj_data.xls

For more information, contact:

Colin Mosley

Economist - Statistics

Economics, Statistics, and Federal Fiscal Relations

Department of Finance

(902) 368-4035

cdmosley@gov.pe.ca

Projections are calculated by Prince Edward Island Statistics Bureau, based on historical population estimates provided by Statistics Canada, Demography Division, 1974 to 2015.

Source of population estimates and components of growth 1975 to 2015: Statistics Canada, Demography Division, *Table 051-0004 Components of population growth, Canada, provinces and territories, annual*. CANSIM (database), <http://cansim2.statcan.gc.ca/cgi-win/CNSMCGI.PGM>